



# Delivering Dreams



Since 1949



# The Book Where Ideas Begin...



## The front cover...

<i>the Trinity</i>	83
<i>the Montana</i>	94
<i>the Alpine</i>	113

## The back cover...

<i>the Austin-Ray</i>	74
<i>the Santana</i>	92

\*NOTE: Artist's renderings in this catalogue do not always reflect actual home specifications.

Some homes are shown with special features such as: rock, stucco, gable treatments, fireplaces, specialty windows, etc., that are not included in the standard specification.

All designs are property of Nelson Homes.

Photo realistic home renderings throughout this book were created by Dale Babinchuk of BeforeImage 3D Visualization, in Edmonton, Alberta.



# Welcome to Nelson Homes...

*We're so glad you could drop in. Here you'll find a wide array of beautiful designs and sensible floor plans. Use these as your idea generators; select the features that you like and we'll create a home that is uniquely yours, distinctive to your taste, budget and lifestyle.*

*At Nelson Homes we take your new home very seriously. It's our passion. Our goal is to make your home building experience go as smoothly as possible. We'll take care of all the major details so that you can get on with enjoying life. Our experienced team of designers, drafts people, purchasers, factory technicians and transport specialists are dedicated to delivering the highest quality homes, on time and on budget.*

*Nelson Homes has delivered over 37,000 homes to families in North America and overseas; it's what we do every day and have been doing for more than 55 years... and we put our heart and soul into every one of them.*

*Thank you for putting your trust in us.*



Welcome to Nelson Homes



Assurance of Excellence and Customer Letters .....	3			
The Company .....	4			
Quality Products .....	6			
The Nelson Panelized Package .....	7			
Customizing Your Home.....	8			
Nelson Homes Authorized Dealers .....	10			
• 900 – 1,300 square feet .....	11			
• Marshall .....12	• Rondel.....17	• Camile.....22	• Devon .....27	• Quesnel .....32
• Allen .....13	• Trident.....18	• Courtney .....23	• Jaymes .....28	• Hailey .....33
• Aaron .....14	• Abbey .....19	• Rebecca .....24	• Rycroft .....29	• Teslin .....34
• McFee .....15	• Jaela.....20	• Clinton .....25	• Shelby.....30	• Ashley.....35
• Whistler .....16	• Omega .....21	• Alida .....26	• Katrina .....31	• Bradford.....36
• 1,300 – 1,800 square feet .....	37			
• Aldrich .....38	• Parnell.....45	• Prescott .....52	• Auguste .....59	• Hartwell .....66
• Kendall .....39	• Albany.....46	• Abilene .....53	• Brooklyn.....60	• Laurier .....67
• Megan.....40	• Lydale .....47	• Sydney .....54	• Lethbridge.....61	• Maidstone.....68
• Mesa .....41	• Aldwyn .....48	• Citation.....55	• Premiere.....62	
• Weatherton...42	• Cranston.....49	• Gatsby.....56	• Cimmeron .....63	
• Paragon .....43	• Savona .....50	• Royale.....57	• Medford .....64	
• Dakota .....44	• Cascade .....51	• Kallie.....58	• Cheyenne.....65	
• 1,800 – 3,400 square feet .....	69			
• Townsend .....70	• Sheffield.....76	• Sienna.....82	• Grayson .....88	• Montana.....94
• Palisar .....71	• Fairfield .....77	• Trinity .....83	• Garrison .....89	
• Vector .....72	• Phoenix .....78	• Winston .....84	• Leighton.....90	
• Remington ....73	• Providence ....79	• Carlisle .....85	• Glenda .....91	
• Austin-Ray.....74	• Ashmont .....80	• Arizona .....86	• Santana .....92	
• Victory .....75	• Covington .....81	• Cyprus.....87	• Medallion.....93	
Multi-Family Homes.....	97			
• Bayfield .....98	• Vermilion .....100	• Langley.....102	• Emerson.....104	• Care Home...106
• Lynden .....99	• Hartford.....101	• Summit.....103	• Ridgedale ....105	
Cottages.....	107			
• Grizzly.....108	• Westwind.....111	• Frontier.....114	• Sagewood ....117	• Pinecrest .....120
• Cottonwood ..109	• Cranbrook....112	• Elkridge .....115	• Westbury .....118	
• Springfield....110	• Alpine .....113	• Pioneer.....116	• Denali .....119	
Photo Gallery .....	121			
Index .....	124			
Suppliers .....	126			
Contact Information .....	back cover			





# Our Heartfelt Thank You

to the many customers who send us letters about their home building experience.  
Your kind words encourage us to pursue higher levels of excellence every day.

"I just wanted to send you a letter of appreciation for your guidance and professionalism in helping me build my new home in Sylvan Lake. It's been one year since I moved into my home and I can't begin to tell you how pleased I am with the Nelson Home package.

When I refer to the Nelson "package", I'm really talking about the entire building experience, starting with the custom design phase through materials ordering, delivery and set up.

Michele\*, I really appreciated the many times you met with me, both at your office and at the building site as we initiated the building design. I'm especially appreciative of your professionalism and patience with the many changes requested as we finalized the design package. Your suggestions on design and colour choices were especially helpful.

Although I've been involved in building 13 previous homes, this is the first time I went with a "home package" plan. Although I had initial reservations, the Nelson package proved superior in terms of delivery and product quality. I'm still amazed at how well the package came together. Many of the sub-trades also commented on the quality of materials and construction.

Ike\* - I can't thank you enough for your guidance as I set the foundation walls in preparation for the home package, and for the actual building of the house itself. The weather was truly lousy, yet you and your team built the house as if it were your own.

I will continue to recommend Nelson Homes, and especially the two of you, to anyone who indicates a plan to build their own home. Thanks again."

Richard Backs

\*Michele and Ike Johnson - Junior J's Investments are Nelson Homes Authorized Dealers in Alberta

"We selected a Nelson home style and made substantial revisions to the plans to meet our architectural requirements. Because of the mountain area at approximately 6500 feet, north of Las Vegas, Nevada, we required 2" x 8" framing, 240 mph external siding and each individual roof tile glued and nailed. Other structural requirements were added, due to the severe 140 mph substantial winds.

Mr. Baker\* has had to fight adverse conditions all the way in building our home. Being 3 stories high with a 40' high roof peak, and with cold winds, snow and crews not caring to work in freezing weather, Mr. Baker has shown the determination to complete the construction.

His integrity, honesty and determination are only a portion of his positive characteristics. We would not hesitate to have him build another home for us and now consider him a good friend."

Sincerely

Dion Q. Fisher & Carolyn M. Fisher  
Pahrump, NV

\*Blud Baker - Aomax Construction is a Nelson Homes Authorized Dealer in Nevada

"I had the pleasure of building a Nelson Home in 1986, and have been more than pleased with all aspects. In fact, we just had the Sask. Energy evaluation done (2004) and the home tested out as good as a brand new home! The service was great - really - couldn't ask for better customer service. The rep was always available and was in contact several times to check on progress. The materials were top-notch, and plentiful - lots of everything to complete the job properly. We'd build another Nelson Home with no hesitation at all. Keep up the good work."

Len Shier, Regina, SK



The Nelson Homes Assurance of Excellence is our promise to you of our total commitment to the creation of a new home for you and your family.

Nelson Homes will ensure that all precision manufactured components will either meet or exceed the high standards of quality set by the National Building Code.

We will promptly deliver the material required to build your Nelson Home based on the specifications outlined on your order.





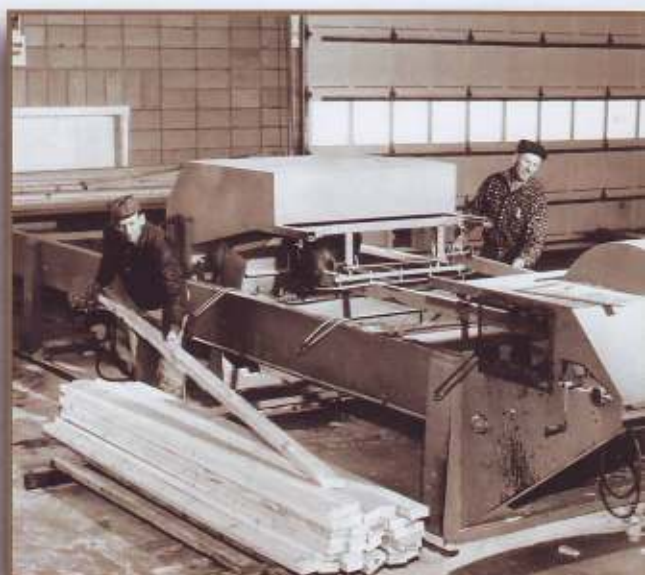
## Once Upon A Time...

On March 1, 1949, brothers Ray and Austin Nelson opened a small lumberyard in Lloydminster, Alberta; they called it Nelson Lumber. Their motto was simple; "Give people - *always* - top quality and more for their money." Business flourished, but the brothers soon realized that people needed more than just lumber and good advice with which to build homes. Their vision was to provide a complete home building service from well crafted designs — to the manufacturing of the components and the delivery of a total package to the customer's job site.

In 1958 a separate division, Nelson Homes, was started. The convenience of the package system was well received in areas where construction labour and efficient delivery were difficult to come by.

The Nelsons' reputation for quality and convenience grew. More Nelson Lumber stores were opened. A construction division handled major building projects and two roof truss factories were added to keep up with demand.

Fascination for the Nelson Homes panelized system spread to overseas markets and in 1993 Nelson shipped its first home to Japan. To keep up with widespread demand, Nelson began offering Authorized Dealerships throughout North America.



The First Nelson Factory

## The Company Today...

Nelson Homes has grown to be Canada's largest home manufacturer and a trusted leader in the industry. More than 37,000 homes, ranging in size from 800 to 14,000 square feet, as well as numerous multi-unit and commercial buildings have been produced.

The comprehensive product line-up now includes housing solutions ranging from materials packages to complete home packages, Ready-To-Move Homes,

cottage packages, multi-family buildings, adult housing and care homes, as well as materials for agricultural and commercial buildings.

In 2001, Ray Nelson transferred the ownership of the company to a group of long-time employees, who continue to carry on the Nelson legacy. Their promise is a continued commitment to quality, craftsmanship, and integrity.



### NELSON LUMBER STORES

Serving Northern Alberta

Bonnyville • Edmonton  
Grande Prairie • Lloydminster  
• Slave Lake



### NELSON MANUFACTURING

4 plants with over 200,000 square feet for component building



### NELSON HOMES

130 Authorized Dealers serving North America and abroad



### NELSON READY TO MOVE HOMES

Delivering complete homes throughout Alberta and Saskatchewan



# Canada's Largest Home Manufacturer



# Residential

Nelson Homes has skilled designers and drafts people who will modify your plan or build the custom design of your choice.



*Delivery of a Nelson Home Package*



*Custom Design, Alaska*

# Commercial

Nelson has the capability to panelize large commercial projects. With the efficient building system, framing time and labour are greatly reduced.

*Construction on the Ramada*



*Ramada*



# Multi-Family

Nelson has many years of experience in building packages for multi-unit homes, such as duplexes and four-plexes, as well as low maintenance adult housing, care homes and assisted living residences. The panel system works well for any sized wood-frame building project.

*Malmstrom Airbase Project, Montana*



*Duplex, Malmstrom Airbase*

# Export

Nelson Homes' international distribution includes the USA, as well as shipments to China, Japan, Iceland, Germany, Hungary, Czech Republic and Ireland. Building codes in each area are strictly adhered to. Specialized wood treatments are used for areas with high humidity.

*Assembling Nelson panelized walls in Japan*





## Roof Trusses

Nelson manufactures engineered roof trusses in state-of-the-art truss factories. Drawings are transferred to computerized omni-saws and laser-guided truss jigs, ensuring accurate cuts so component joints fit tightly together. Even complex systems, like dual pitch, parallel chord or hockey stick trusses fit together with precision.



Roof System

## Complete Packages

The complete home package is designed to make building a new home go smoothly, saving you time and headaches.

It is a convenient, one-stop service, where people with years of experience handle all the major details. The package consists of everything you need

to get your home to the secure lock-up stage...and beyond, including roof, floor and wall systems, exterior finish, windows, doors and more.



Load #1 of a Home Package

## Panelized Walls

Made-to-measure exterior and interior wall panels are built using only top grade lumber. Panels come in pre-built sections, have framed-in window and door openings, and OSB

sheathing applied – ensuring quick framing time, lower labour cost and less material waste. Components are numbered and cross-referenced with the blueprints for quick assembly at your job site.

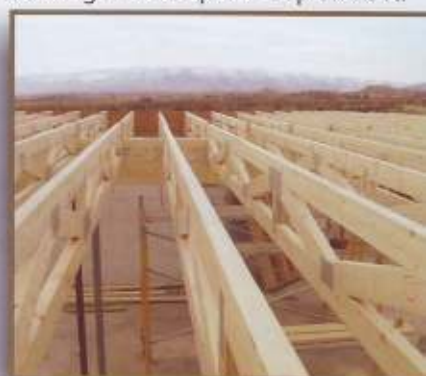


Wall Panel Factory

## Floor Systems

Nelson utilizes two types of engineered floor systems: the I Joist and its own Open Web truss design. The open web allows for longer floor spans – up to 22 ft.

The web design will minimize floor “bounce” and makes for a strong, quiet floor. Ductwork can be hidden in the open web design, often eliminating drop downs in basement ceilings.



Open Web Trusses

## Lumber & Material

Nelson Homes uses only top grade, Canadian, kiln-dried lumber, selected directly from lumber mills.

Factory workers keep an eye out for imperfections and reject any lumber that doesn't adhere to Nelson's strict standards. Experienced purchasers research windows, doors and other materials, ensuring that you get the best value and most innovative products from reputable suppliers who stand behind their products.



High Quality Lumber

## Delivery

You'll get a guaranteed delivery date, which makes for efficient scheduling of contractors. Custom drop-deck and enclosed trailers are used for shipping to conventional building sites.

For remote areas, materials packages are delivered by barge, train, helicopter or Hercules transport plane. Home packages for overseas are shipped in large container vessels.



Delivery by Barge



# Why Panelized is Better



Day 1 - Unloading wall panels



Day 2 - Sheathing floor



Day 3 - Building exterior walls



Day 4 - Building the turret



Day 4 - Putting up roof trusses



Day 5 - Sheathing roof

## Superior Quality

- With climate-controlled manufacturing, lumber remains dry, resulting in straighter components due to less warping, twisting and shrinking.
- That means you'll have less cracks and nail pops and windows and doors will fit properly, thus requiring fewer repairs and adjustments later on.
- Computer technology ensures that cuts are made precisely; components fit together with great accuracy.
- Nelson's drafts people and Authorized Dealers keep apprised of the many Building Codes in various areas. You get the assurance that your home is manufactured in accordance with your region's strict requirements for proper insulation values, snow loads, wind velocity, etc.

## Time & Money Savings

- The Nelson system of pre-planning virtually eliminates costly and time-consuming construction errors and material shortages or overages.
- Your home will be to lock-up stage quickly, reducing the chance of weather delays and theft.
- Your price is guaranteed up front; there are no surprises, such as unexpected price increases for materials. Nelson Homes provides one of the best price guarantees in the industry.
- You'll spend less time researching the vast array of product choices. Nelson Homes' experienced representatives will assist with your decisions, offering advice and product knowledge.
- Less material is wasted and job-site clean-up costs are reduced.

*A Better Built Home...  
In Less Time... With More Peace of Mind*

## Package Includes

Material specified is the standard specification. A wide variety of options are available. Materials supplied will conform to the Building Code in your area.

- **Floor System** – Including joists or trusses, beam, teleposts & OSB subfloor
- **Roof System** – Trusses, gables, ladders, sheathing, hardware, roof vents, flashing, soffit, fascia and shingles
- **Wall System** – Wall panels are built in sections - exterior and interior. Ready for wiring; walls come complete with framed window and door openings, and OSB sheathing applied. House wrap (air barrier) is also included in the package.
- **Windows** – Vinyl windows in picture, casement or awning style, as per plan
- **Exterior Doors** – Ready to install, primed, insulated steel doors with weather stripping, metal cladding, jambs, brick mould and sills
- **Siding** – Vinyl siding and trim kit
- **Insulation** – Fibreglass wall insulation, ceiling insulation, and polyethylene vapor barrier
- **Drywall** – Aqua board, tape, corner bead, joint cement
- **Interior Finish:** Stairs, doors, closet doors, jambs, locksets, casing, baseboard, closet shelving, and hardware. Interior railings may be included on some models.

**Note:** Homes with garages come with insulated overhead door and man door, in addition to all the framing and insulation materials.

### Construction Options

You can be as involved in the construction of your home as you want. You may build the home yourself or appoint your own general contractor. Your Authorized Dealer may build the home or make suggestions for sub-trades.

### Financing & Payment Options

Your Nelson Homes Authorized Dealer can help you tailor a financing and payment plan that suits your needs in your location.



# Customizing Your Home

At Nelson Homes we believe that your home should reflect your lifestyle. That is why we are leaders in customization.

Use the ideas in this book to determine the style and features that are important to you. With assistance from your Authorized Dealer or Sales Agent and Nelson's drafting specialists, your ideas will be incorporated to make the perfect home for you. You may love the look of a home style, except on a smaller or larger scale. Our talented design team can shrink or enlarge your plan, or flip it to accommodate your lot style. You may want to add a fireplace, a garden door or have a specially sized garage to fit all your recreational toys. Or perhaps you have very special requirements, such as a barrier-free home plan. We can build to suit your needs.

*Have your very own home plan in mind?*

*Bring us your ideas and we'll create the drawings and blueprints for you.*

## the Aaron Customized

The home below was modified to fit on a narrow lot with additional color and design changes to suit the family



## One Plan - Two Looks



### Modifications to this plan include:

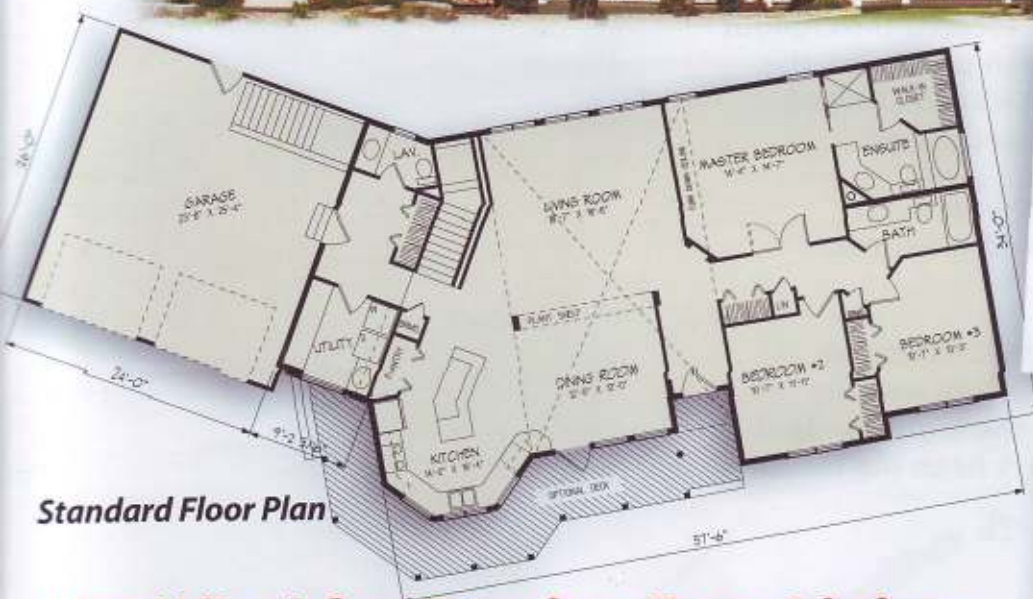
- garage removed to accommodate a narrow lot
- gable above bay changed to peak
- window added in entry
- posts added at the front
- shingle, siding, trim, soffit and fascia colors changed
- window grills changed to perimeter grills



# Choose Your Own Unique Style



## the Remington Customized



### Exterior Design Modifications

- roof designed to 8/12 pitch for added street appeal
- shingle, siding, trim, soffit and fascia colors changed
- window style changed to double hung
- shakes added to gable peaks
- river rock added

### Floor Plan Changes:

- garage expanded to 26' to accommodate a vehicle lift
- stairs from garage to house eliminated for direct access to home
- built on grade level
- doorways expanded to 3' wide
- hallways made to a spacious 4' width
- large bathroom (Bedroom #3 converted) and master ensuite modified to include more counter seating space and handi-cap rails, tubs and showers
- half-bath and walk-in closet expanded
- kitchen island removed for ease of movement
- kitchen counter tops lowered to 30 inches
- windows made lower for better visibility
- deck eliminated - grade level patio

## Modified for Barrier-Free Living





# Nelson Homes Authorized Dealers



Nelson Homes are sold by Authorized Dealers and Sales Agents located throughout North America.

The growing dealer network currently serves over 130 dealers, located throughout the west-central Canadian provinces, the Territories, and the west-central United States, including Alaska and Hawaii.

In Northern Alberta, home sales are serviced through Nelson Lumber retail stores.

Nelson Homes Authorized Dealers are independent business people who are committed to continue the high standard of service that has always been the Nelson Homes trademark.

Visit  
**[www.nelson-homes.com](http://www.nelson-homes.com)**  
or call us toll free at  
**1-800-661-6534**  
and we will put  
you in touch  
with a dealer  
near you.





900 – 1300 sq. ft.



*"I was very impressed with the quality of material they sent out. I do a lot of construction and know you can't find that kind of lumber in a lumber store."*

*Garry Parasychnuk  
Edmonton, AB*

\*NOTE: Artist's renderings in this catalogue do not always reflect actual home specifications.

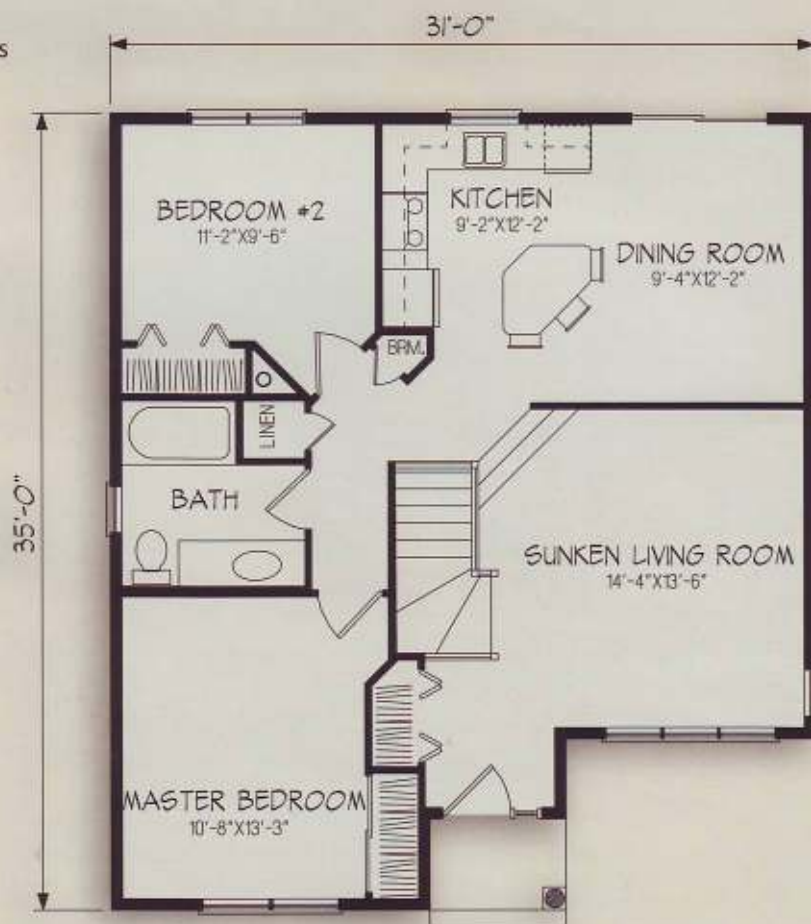


# the Marshall



978 sq. ft.

- This charming raised bungalow with a covered front entry has a lot of appeal for first-time home buyers
- A sunken living room features 9-1/2 foot high walls and stacked clearstory windows
- Country-style kitchen and dining area boasts access to outdoor living

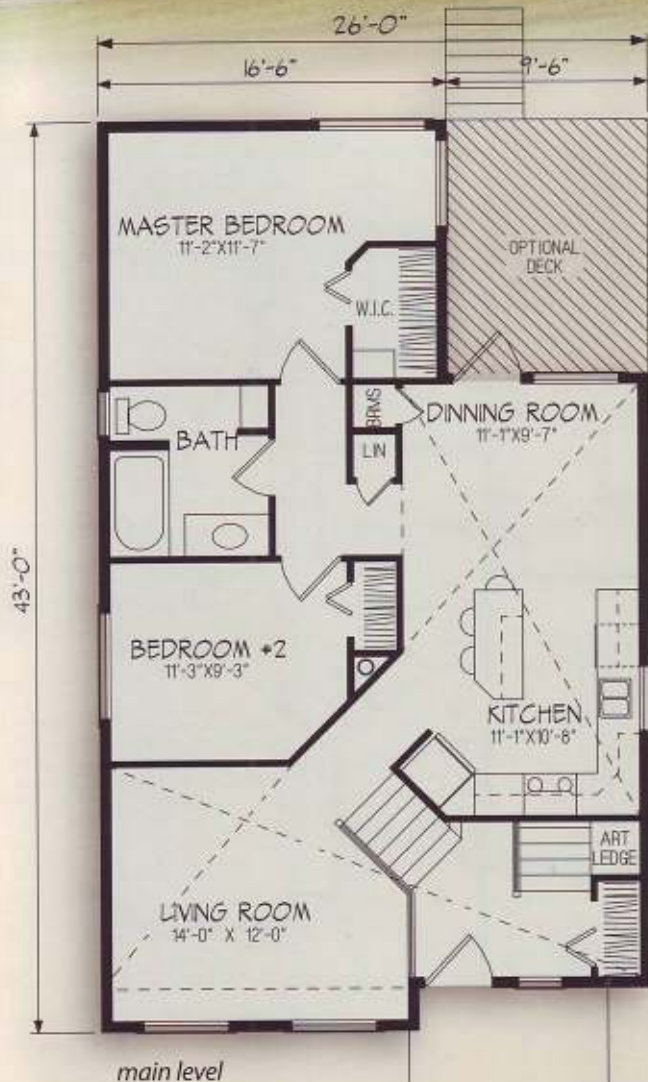






982 sq. ft.

- Delightful two-bedroom bi-level plan, suitable for a narrow lot
- Bright, open kitchen and dining area
- Optional lower level for an additional two bedrooms, full bath and utility room



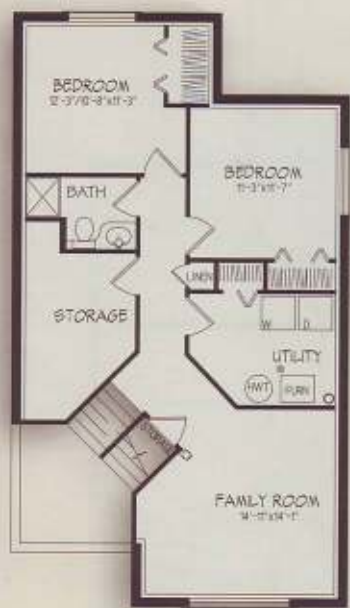


# the Aaron



1021 sq. ft.

- Comfortable open design
- Spacious grade-level entry with plant shelf
- Drywall columns define living area
- Lower level has many options for future development



proposed lower level  
future development optional

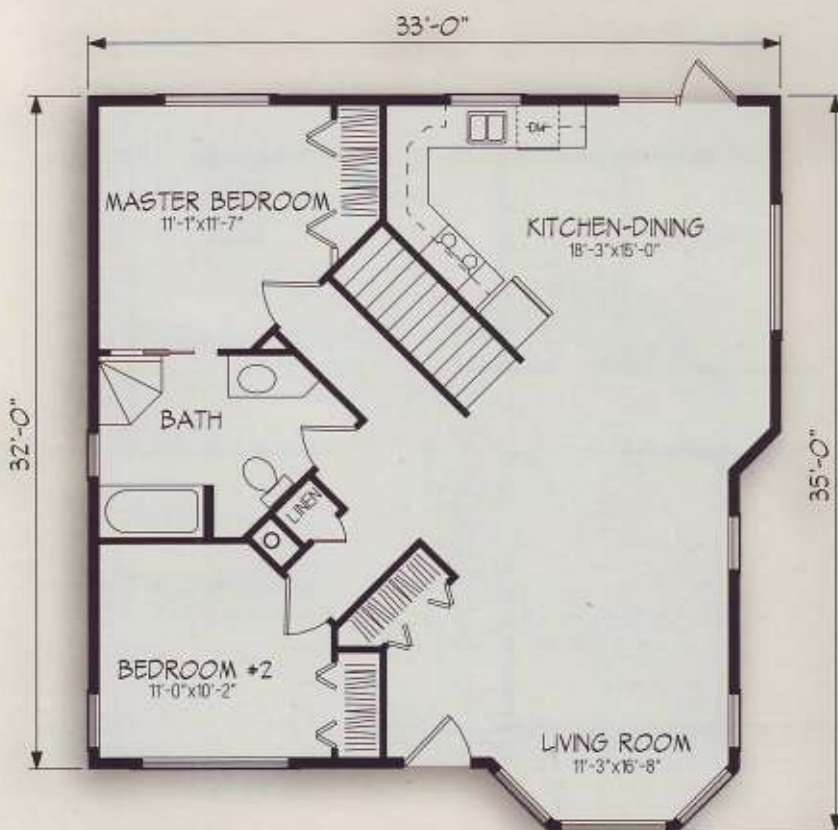






- Two-bedroom bungalow with spacious, open plan
- Bayed living room window
- Open floor plan through living room, kitchen and dining area
- Garden door off the kitchen to back yard

1053 sq.



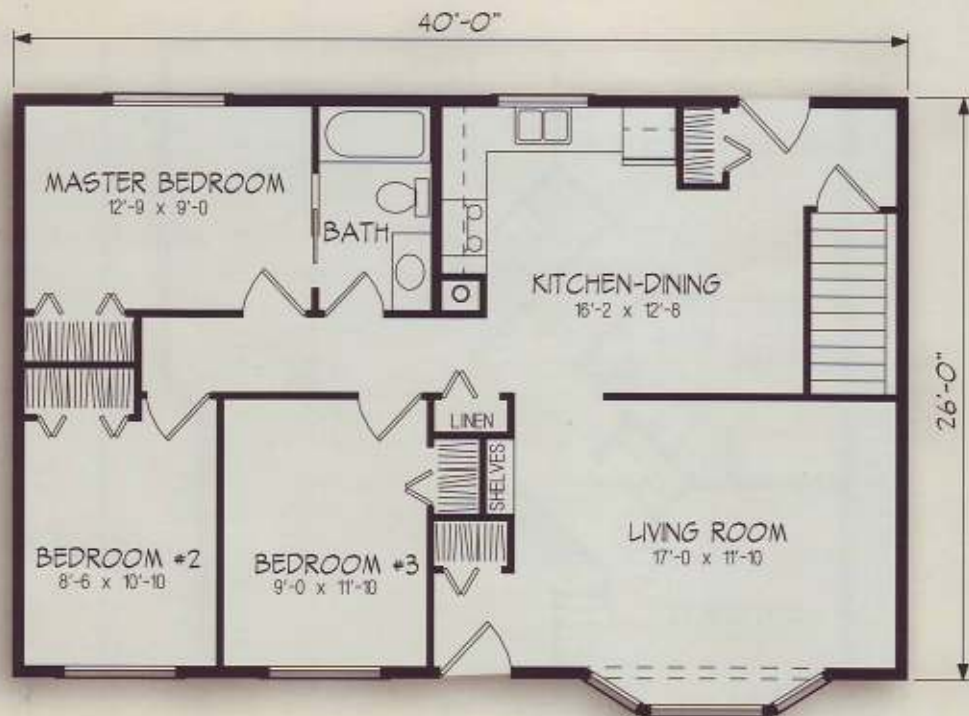


# the Whistler



1054 sq. ft.

- Living room bay window enhanced by gable roof
- Spacious, well-planned country-style kitchen
- Handy back entry with direct access to basement
- Plenty of closet space at both entries

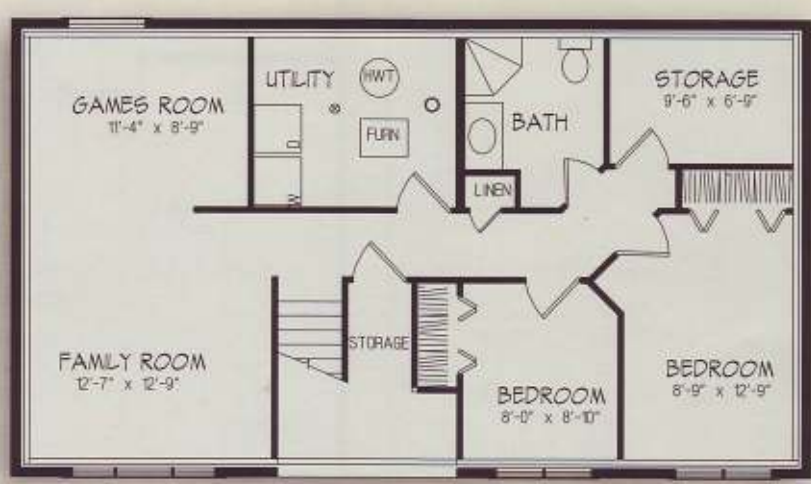






- Kitchen includes pantry, broom closet and plenty of cabinets
- Wood-turned railings surround the split-level front entry
- Master bedroom has three-piece ensuite
- Lower level features two additional bedrooms, games room and family room
- Garden doors off dining room

1073 sq.



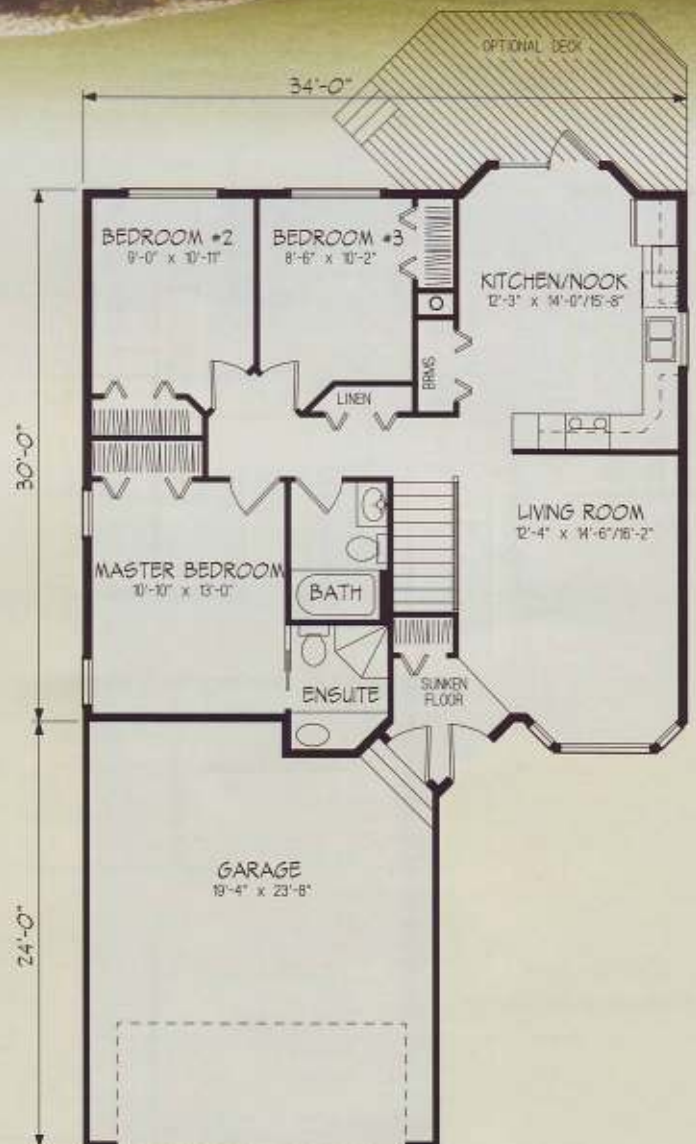


# the Trident

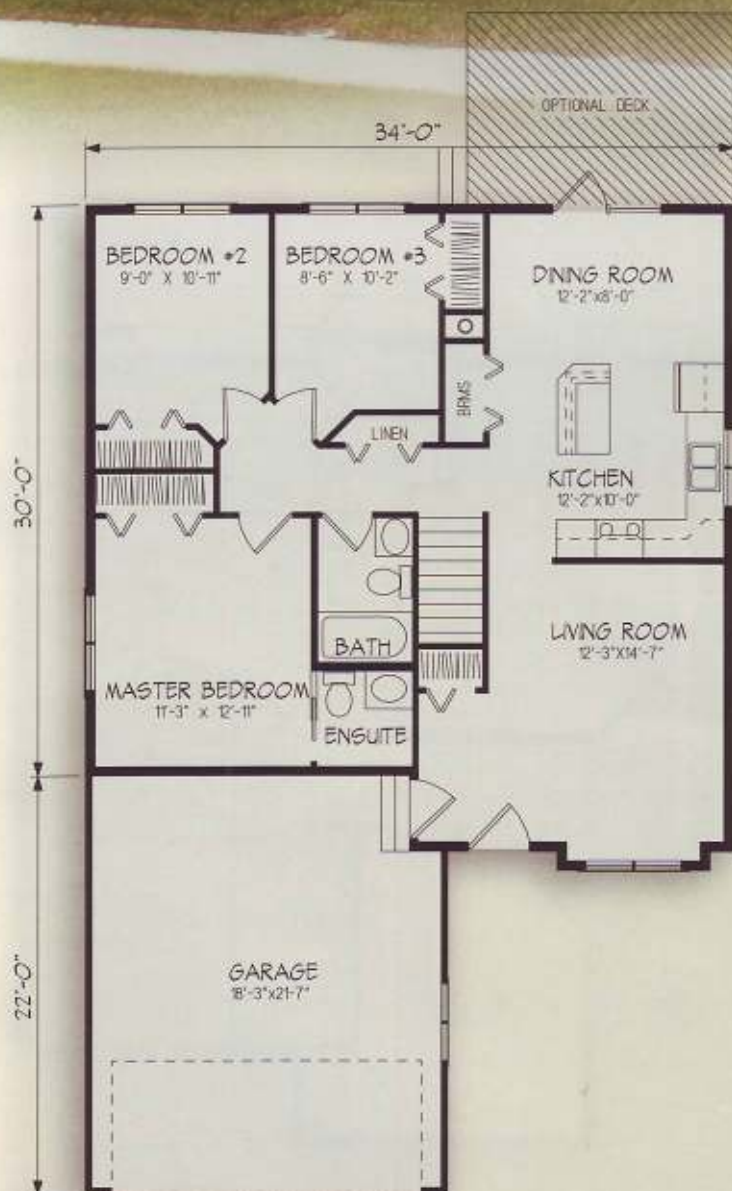


1074 sq. ft.

- Bay window in the living room provides plenty of natural light
- Modern L-shaped kitchen with bay-shaped nook
- Garden doors access optional rear deck
- Master bedroom has an ensuite with corner shower
- Garage access to sunken foyer







- Simple efficiency is key to this thoughtful design
- Gourmet island kitchen adjoins dining area, with direct access to outdoors
- Secondary bedrooms are accessed through angled doors
- Private half bath in the master suite

1096 sq.





# the Jaela

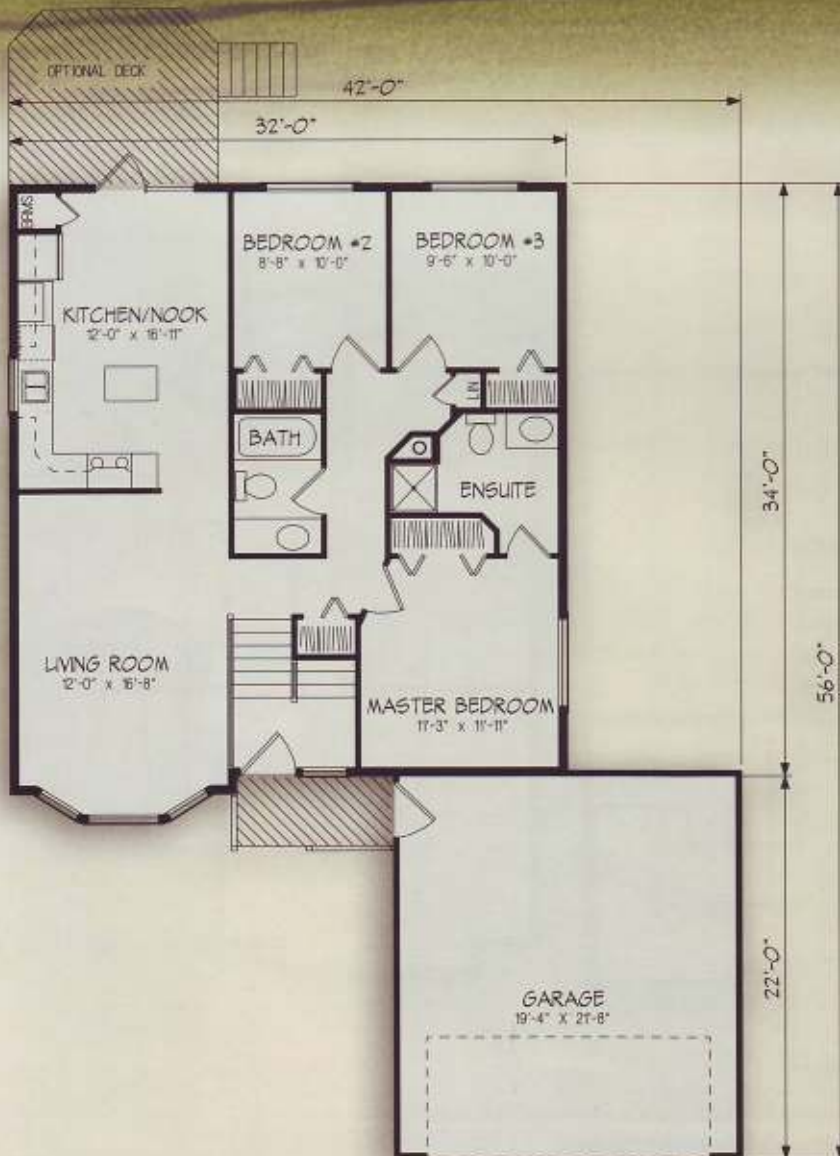


1111 sq. ft.

- Angled entry makes this plan ideal for corner lot development
- Open planning adds versatility to this compact three-bedroom design
- Second bedroom can double as a home office or den
- Generous master bedroom has private ensuite







- Bay window allows plenty of natural light in
- Large kitchen with center island has access to the optional rear deck
- Master bedroom has a large ensuite

1115 sq.



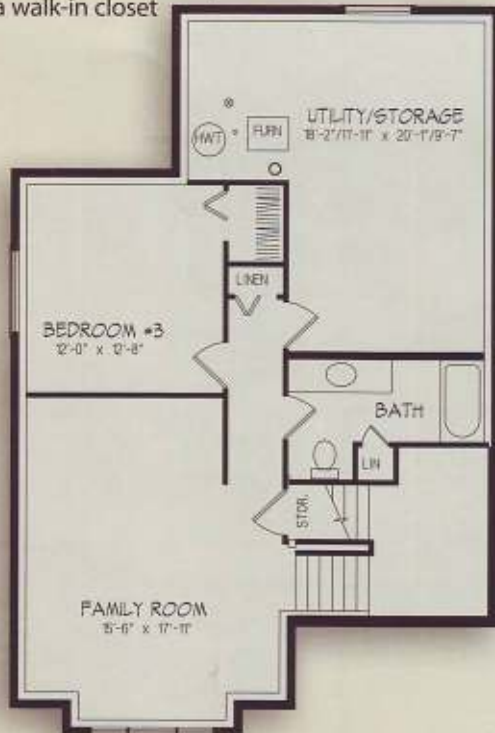


# the Camile

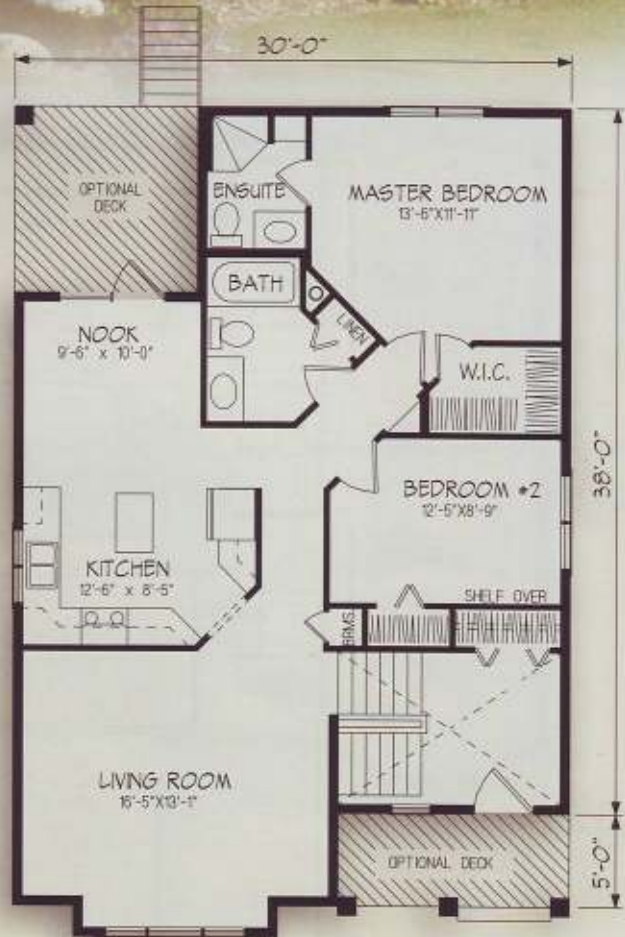


1147 sq. ft.

- Bi-level entry design with a fresh new look
- Covered front porch leads to a vaulted foyer
- Informal kitchen/eating area is highlighted with an arched entrance and center island
- Kitchen with access to an optional covered back deck
- Master bedroom features three-piece ensuite and a walk-in closet



proposed lower level  
future development optional



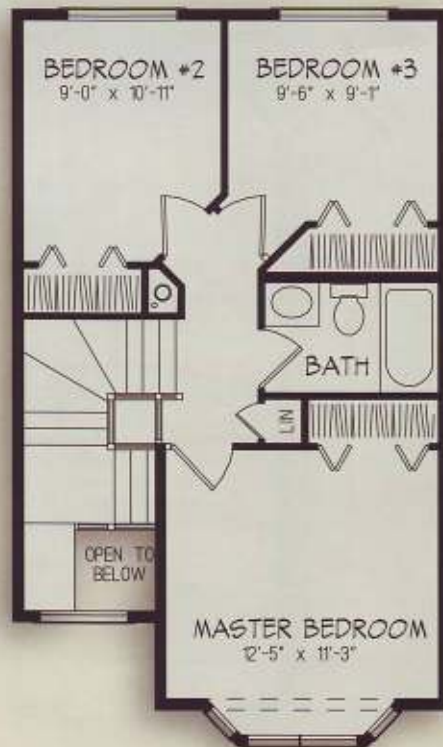
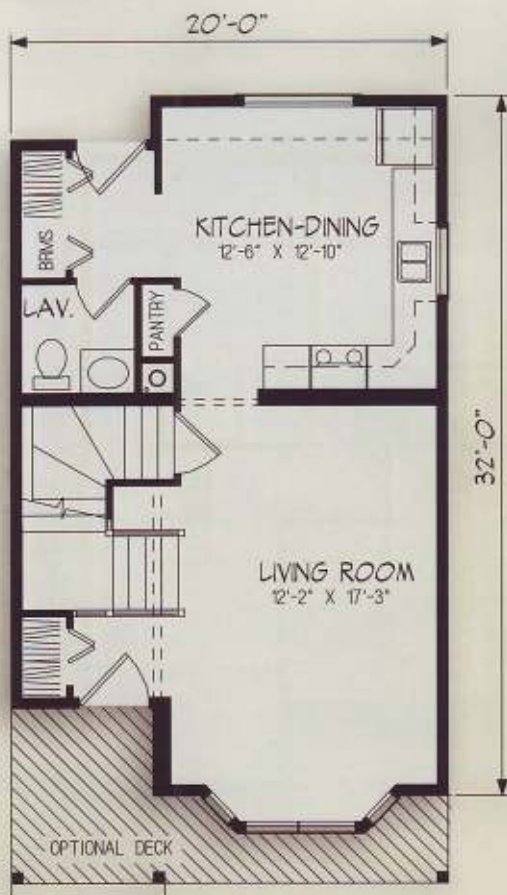
main level





- Quaint two-storey home with front veranda is ideal for a narrow lot
- Main floor features living room and kitchen/dining area with half bath
- Open stairway to second floor with three bedrooms, main bath and ample closet space
- Master bedroom expanded by front bay window

1147 sq.  
Main 614 sq.  
Upper 533 sq.





# the Rebecca

1162 sq. ft.

- Beautiful three-bedroom bungalow with covered front deck
- Efficient kitchen features ample cabinets and convenient center island work area
- Bayed patio doors off dining area expand dining space
- Large sunken side entry with access to basement
- Master bedroom has double closet and private ensuite
- Vaulted ceiling, round top window and fireplace optional







40'-0"



- Ideal plan for a sloped lot
- Sunny dining nook convenient to kitchen and serving bar
- Large dressing room and ensuite off the master bedroom

1164 sq.





# the Alida



1169 sq. ft.

- Practical design focuses on the open, vaulted living, dining and kitchen areas
- Efficient L-shaped kitchen with walk-in pantry and center island
- Master bedroom with three-piece ensuite and optional mirror-by-pass doors







1180 sq.

- Front entry enhanced by arch detail
- Kitchen features bay window and eating nook
- Master bedroom has a walk-in closet and private ensuite
- Front foyer dropped one riser, with feature stairs and open railing





# the Jaymes



1180 sq. ft.

- Stylish and compact design
- Shared entry provides immediate access to spacious living room and wood-railed staircase
- Master bedroom enjoys private three-piece bath and walk-in closet
- Kitchen features corner sink, walk-in pantry and direct access to outdoors

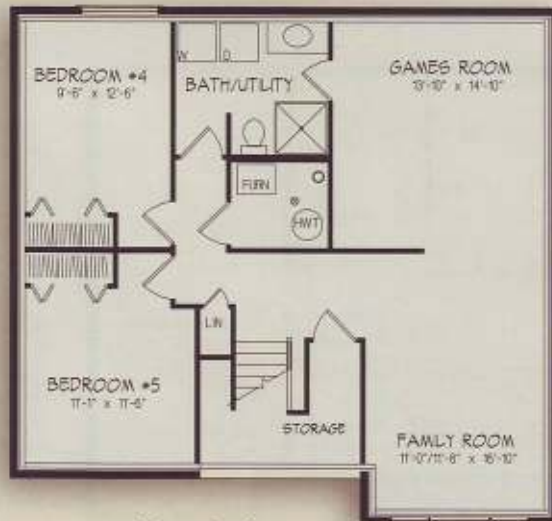






1180 sq.

- Bi-level with interesting exterior accents including a low profile roof line
- Kitchen has dining nook set in a bay window and a doorway to optional raised deck
- Open-rail stairs lead from foyer to living and dining room
- Attached garage provides secure access to foyer
- Master bedroom has walk-in closet and ensuite



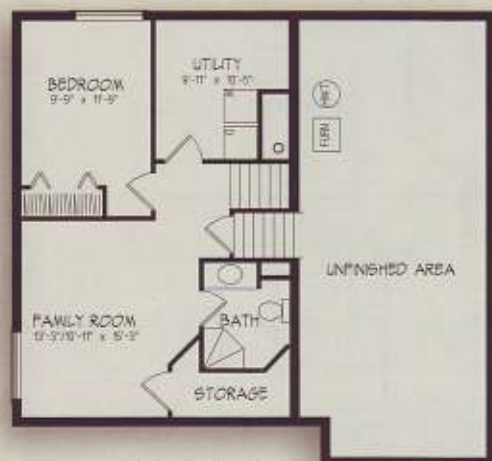
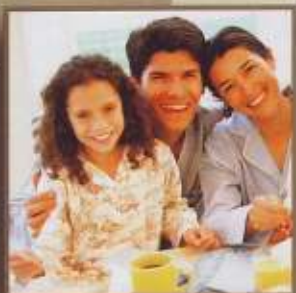


# the Shelby



1192 sq. ft.

- Interesting multi-tiered roof line
- Attached garage provides direct access to front foyer
- Space and light-enhancing bay window in living/dining area
- Efficient kitchen features sunny bay window off casual eating nook with doorway to optional deck



*proposed lower level  
future development optional*



*main level*





- Front entry features interesting detailing over the open stairwell
- Large bay window brightens this kitchen/nook combination
- Kitchen includes a center island and a large pantry/broom storage
- Spacious master bedroom has private three-piece ensuite
- Garden door off kitchen

1244 sq





# the Quesnel

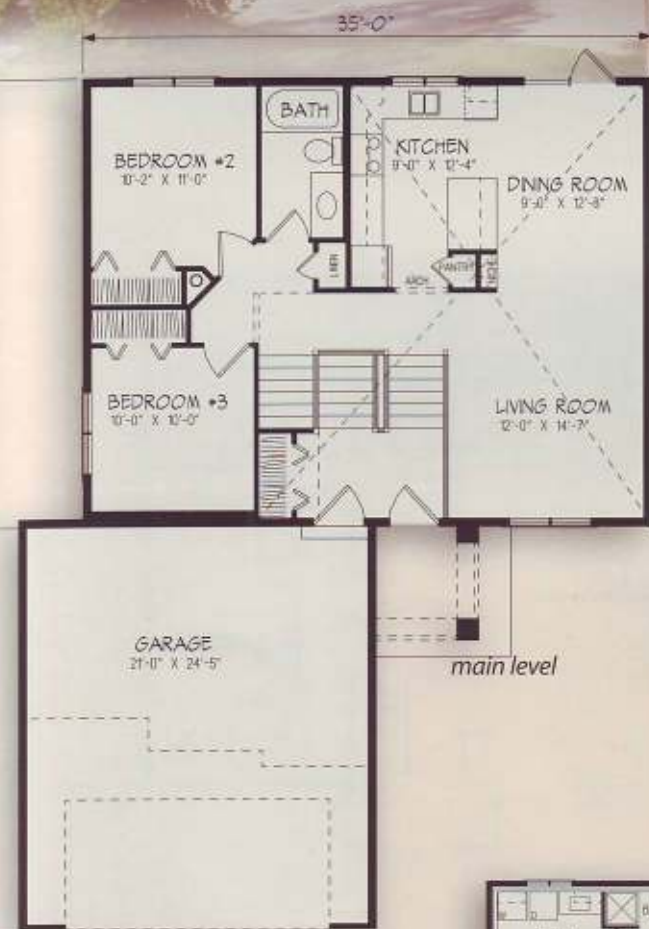


1254 sq. ft.

- Spacious ground-level foyer with garage access
- The combined living/dining room boasts plenty of windows for view and natural light
- Kitchen and combined nook provide access to optional rear deck
- Large master bedroom has ensuite with corner shower







- Innovative design has tremendous street appeal
- Vaulted ceiling over entire living area and stairwell
- Raised master bedroom above garage has ensuite and walk-in closet

1268 sq.  
Main 963 sq.  
Upper 305 sq.



proposed lower level  
future development optional





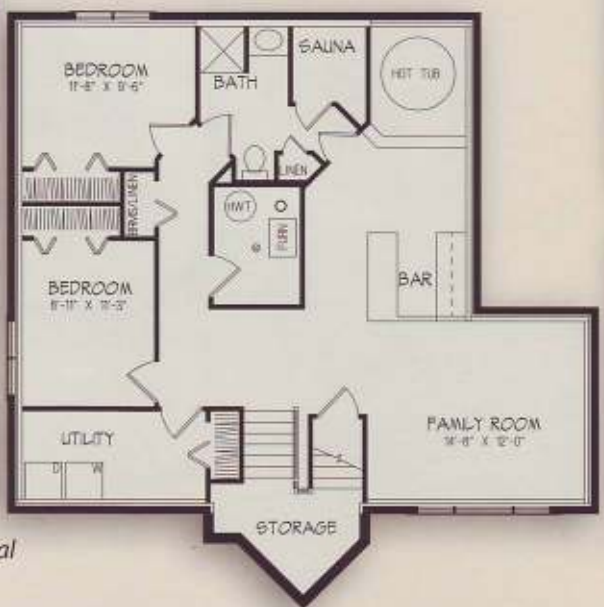






- Combined kitchen/eating nook opens onto raised deck
- Direct access from garage to house
- Foyer leads to a spacious L-shaped living and formal dining room with optional built-in fireplace

1290 sq.



proposed lower level  
future development optional



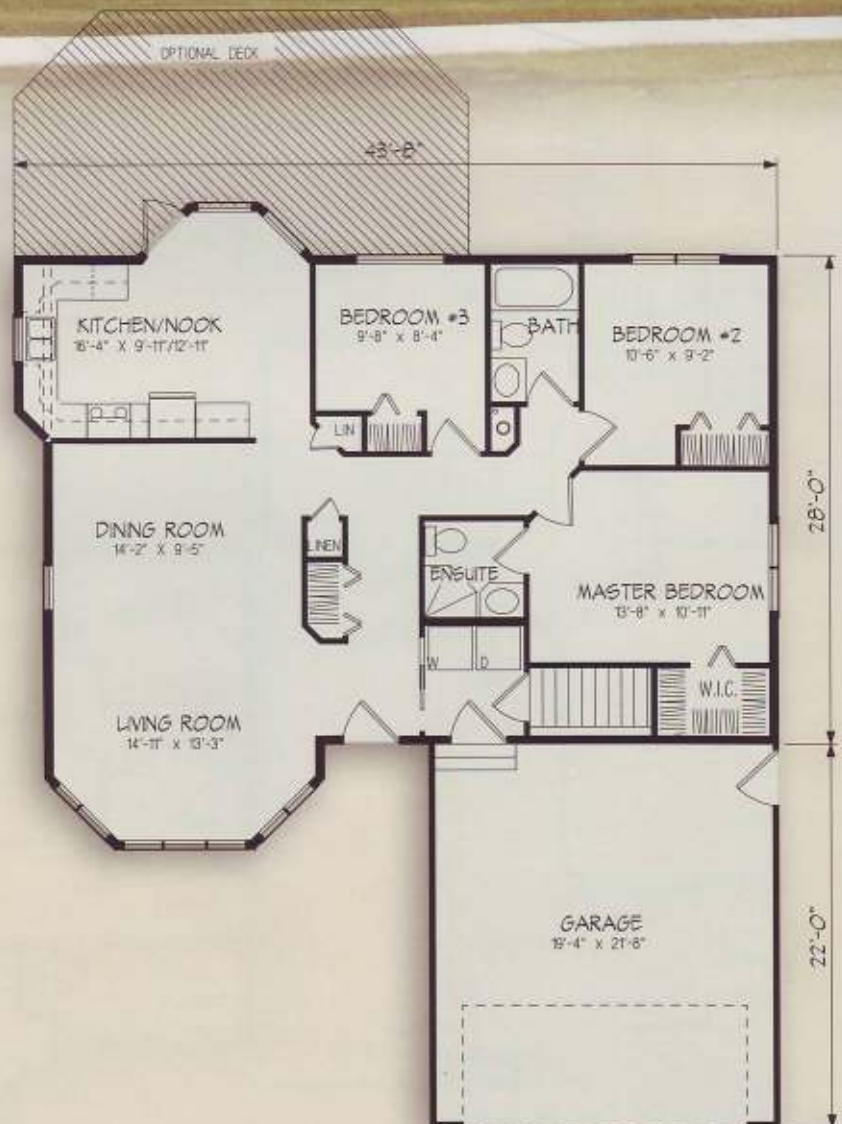


# the Bradford



1296 sq. ft.

- Large U-shaped kitchen with nook leads to deck
- Combined dining/living room accented with vast bay window
- Main bathroom is central to bedrooms and living space
- Master bedroom features walk-in closet and private ensuite
- Two-car garage features house access as well as side access





1300 – 1800 sq. ft.



*"We have done a lot of research regarding home designs, construction, function and housing companies.*

*We were able to talk with four of your previous customers who all had positive things to say about your company."*

*Brad and Heather Lytle  
Telkwa, BC*

\*NOTE: Artist's renderings in this catalogue do not always reflect actual home specifications.



# the Aldrich



1322 sq. ft.

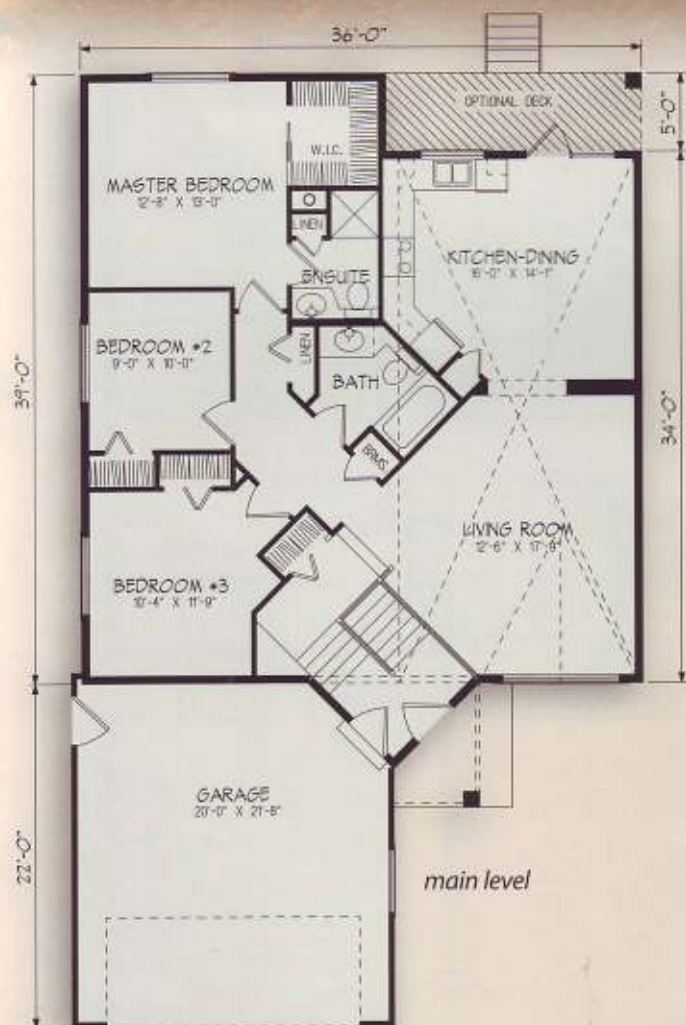
- Ideal country plan with convenient rear entry and utility room
- Spacious living room with popular turret roof
- Efficient kitchen with plenty of cabinets and walk-in pantry



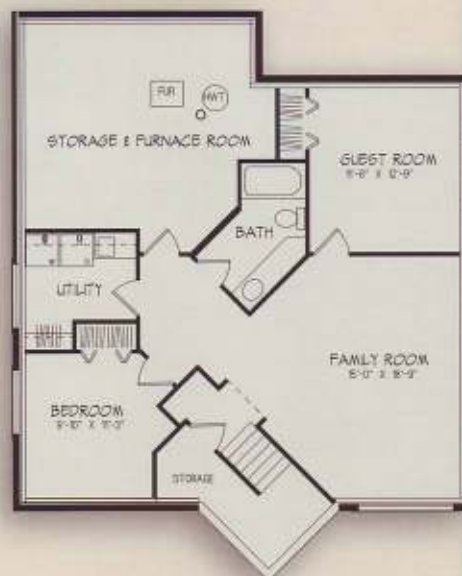




1353 sq.



- Appealing design features expansive vaulted ceilings
- Open floor plan of this three-bedroom bi-level is ideal for narrow lot construction
- Arched entrance leads to the wrap-around kitchen and dining area
- Large master bedroom boasts a three-piece private bath and walk-in closet



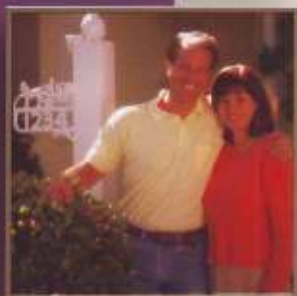


# the Megan



1356 sq. ft.

- Spacious vaulted entry with plant shelves
- U-shaped kitchen adjoins dining area; garden door accesses covered deck
- Large master bedroom with walk-in closet and ensuite
- Living room has optional fireplace and cathedral ceiling







1358 sq.



- Large bay window accents living room
- U-shaped kitchen with adjoining dining area
- Master bedroom has plenty of closet space and large ensuite
- A full bathroom serves two additional bedrooms
- A combination half bath/laundry room is located with easy access to garage or rear entry

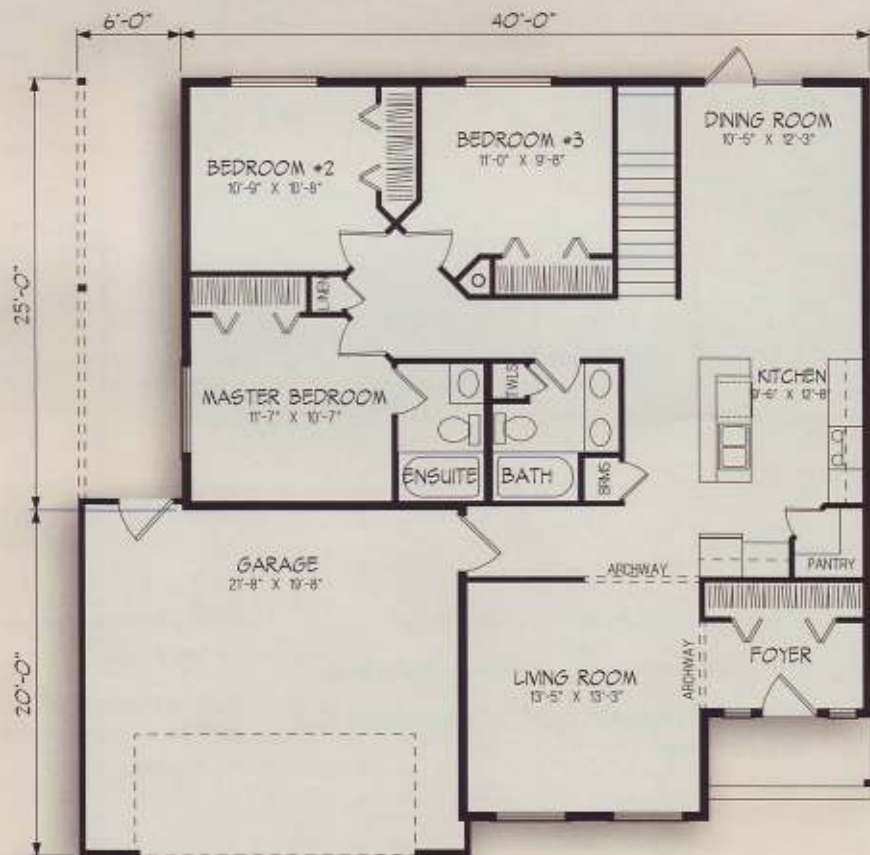


# the Weatherton

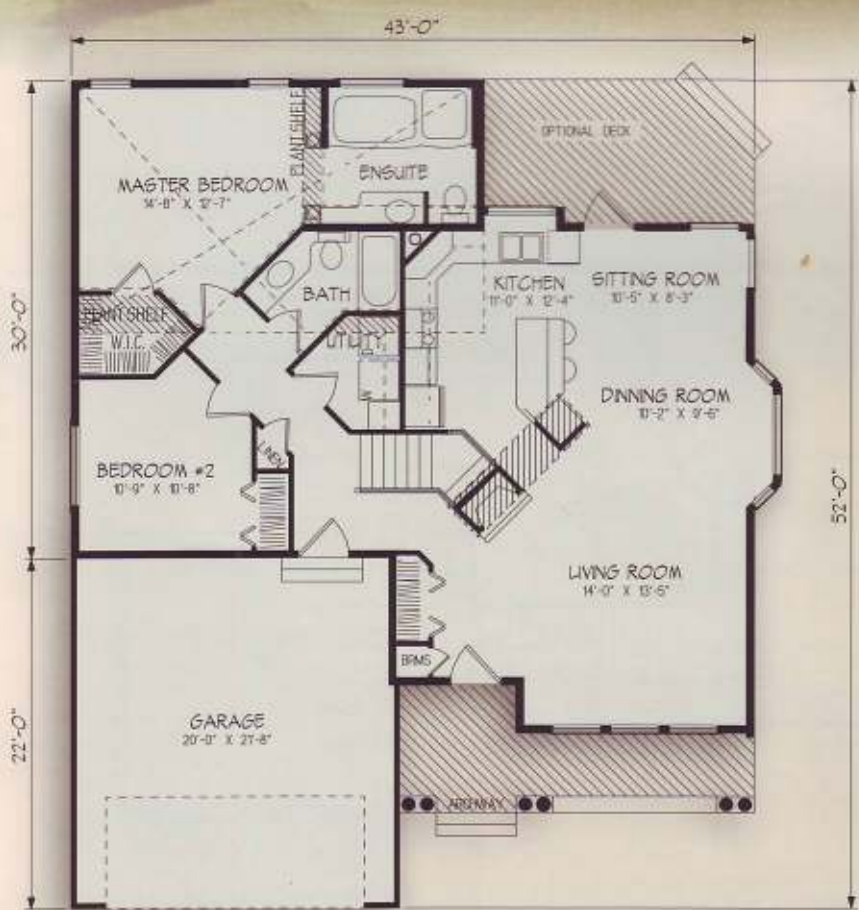


1375 sq. ft.

- Master bedroom has private ensuite
- Garden doors off dining room to back yard
- Attractive archways at entrance and living room
- Kitchen with island sinks and eating ledge







- Nine-foot ceilings throughout home create interesting plant ledges at entry and fireplace
- Vaulted ceiling over master bedroom and ensuite
- Double columns to front porch add to street appeal
- Bulkhead bridge to kitchen separates formal and informal areas
- Open stairwell through to kitchen

1378 sq.



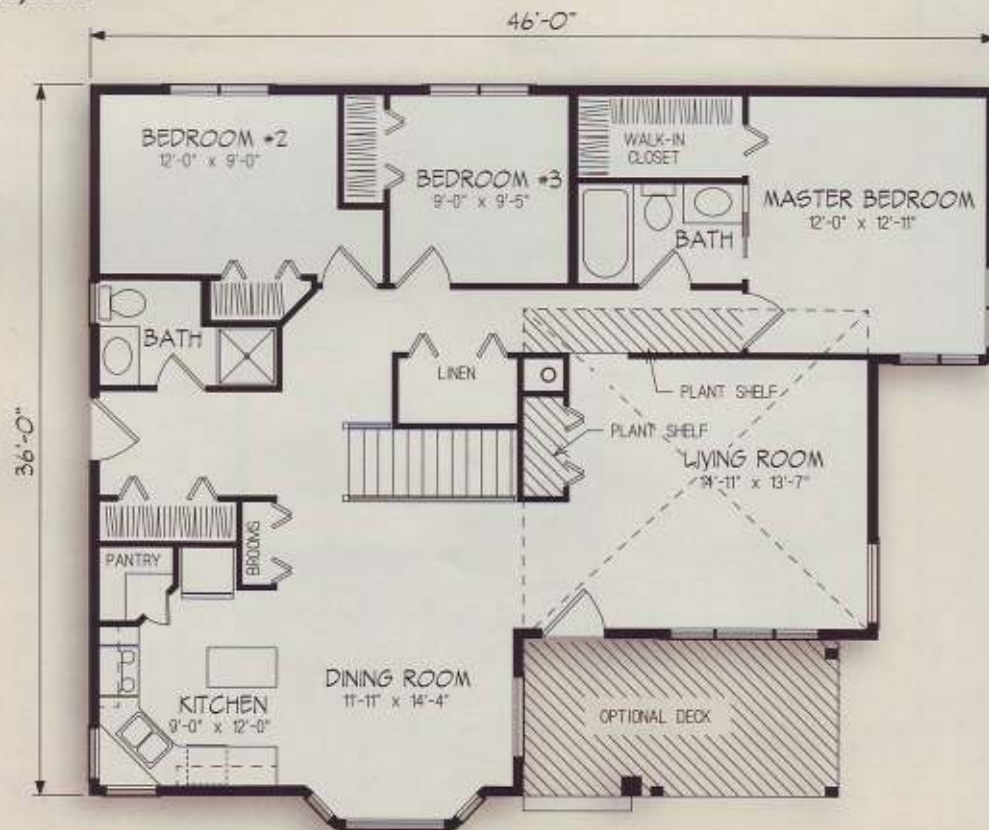


# the Dakota



1393 sq. ft.

- Front entry features porch and sundeck
- Cathedral ceiling opens up living room area
- Kitchen with large pantry and center island
- Large bayed dining room is adjacent to open-railed stairwell
- Master bedroom features double entry to main bath





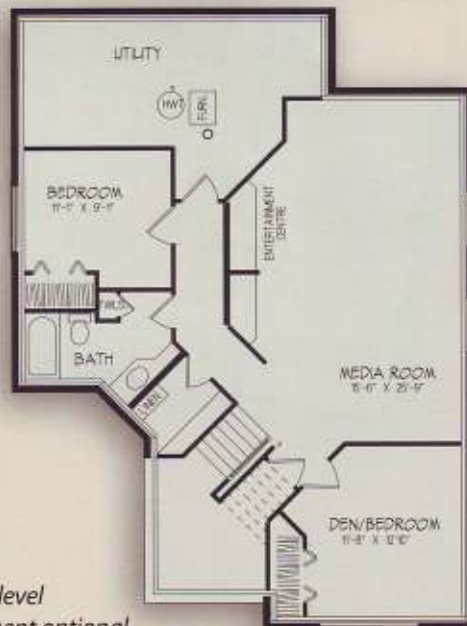


main level

- Vaulted ceiling in the living room
- Optional two-sided fireplace adds warmth and charm to dining and living room
- Bright garden doors off the nook
- Convenient main floor utility room
- Luxurious master ensuite enjoys sunlit whirlpool, private shower and walk-in closet

1404 sq.

proposed lower level  
future development optional



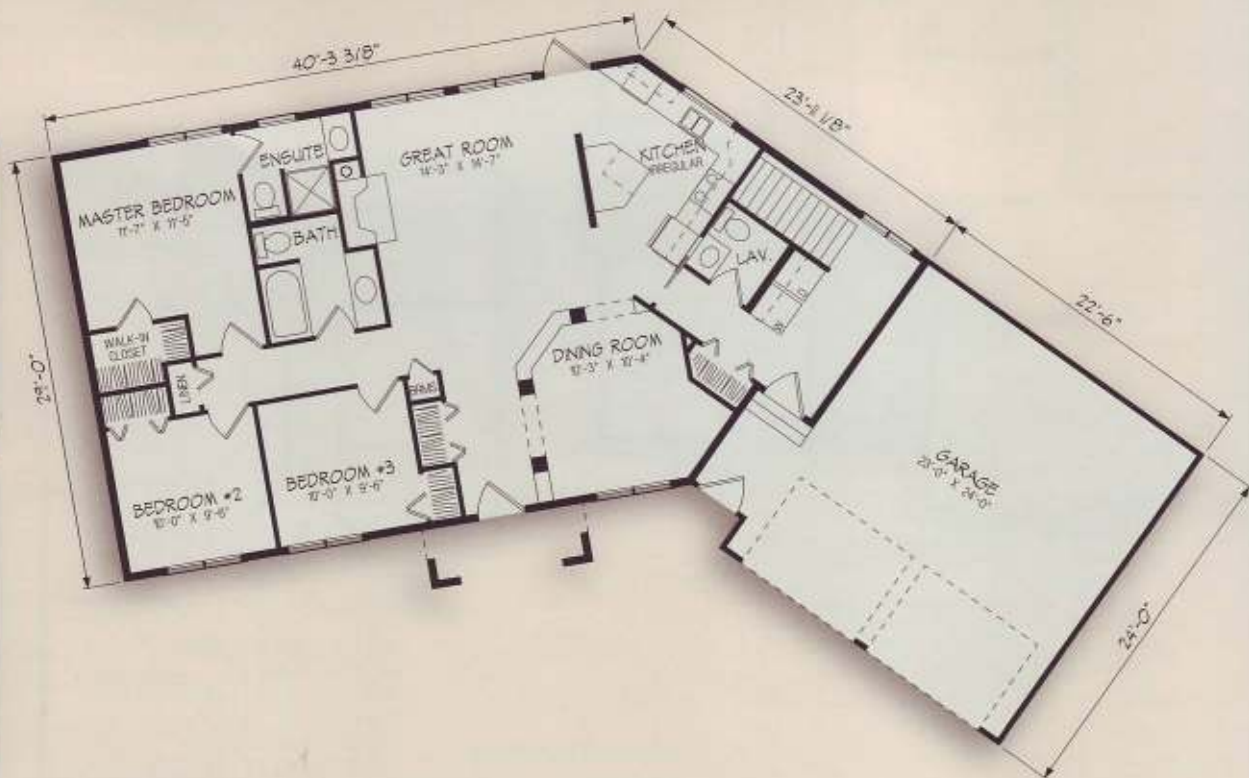


# the Albany

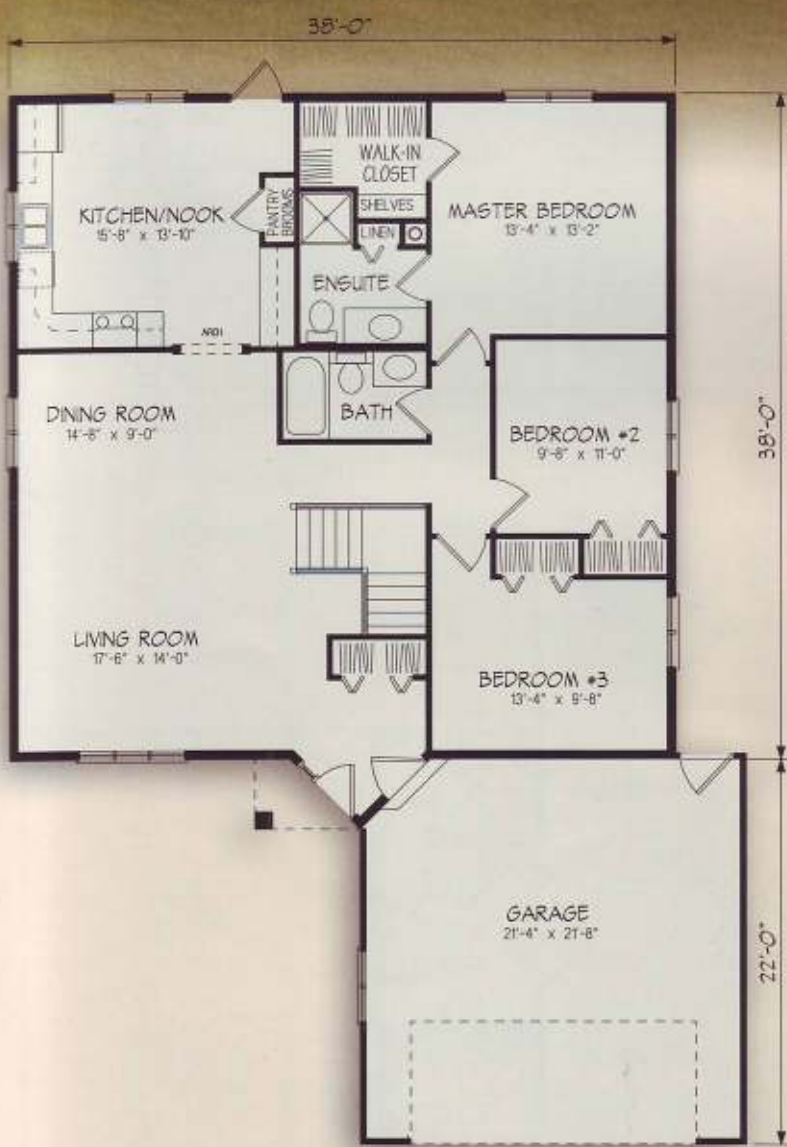


1412 sq. ft.

- Raised covered entry and angled garage
- Open kitchen, dining and great room for casual country living
- Master bedroom features a three-piece ensuite and walk-in closet







- Economical square floor plan
- Front entry and coat closet shared with garage entrance
- Open-railed stair adds features to living and dining areas
- Formal areas separated from informal kitchen and nook
- Generous walk-in closet and three-piece ensuite enhance master bedroom

1460 sq.





# the Aldwyn

1461 sq. ft.

- Ranch style bi-level takes advantage of bright, sunny lower level development
- Convenient utility room and formal foyer share grade-level entrance
- Contemporary turret at living room
- Large, open kitchen
- A deep garage for workshop or storage area
- Optional rear deck leading to grade-level patio

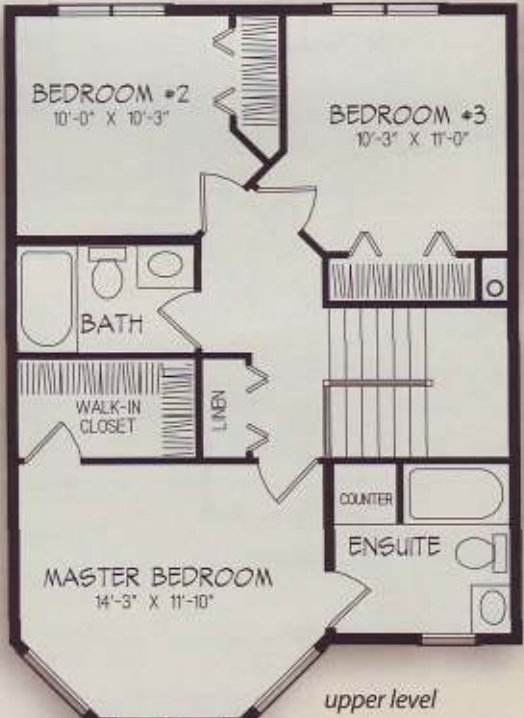






1467 sq.  
Main 764 sq.  
Upper 703 sq.

- Two-storey, three-bedroom home with popular turret design
- Suitable for a narrow lot
- Front entry features covered deck
- Main floor laundry
- Kitchen features center island and large pantry
- Master bedroom with large bayed windows, private ensuite and walk-in closet



main level

upper level

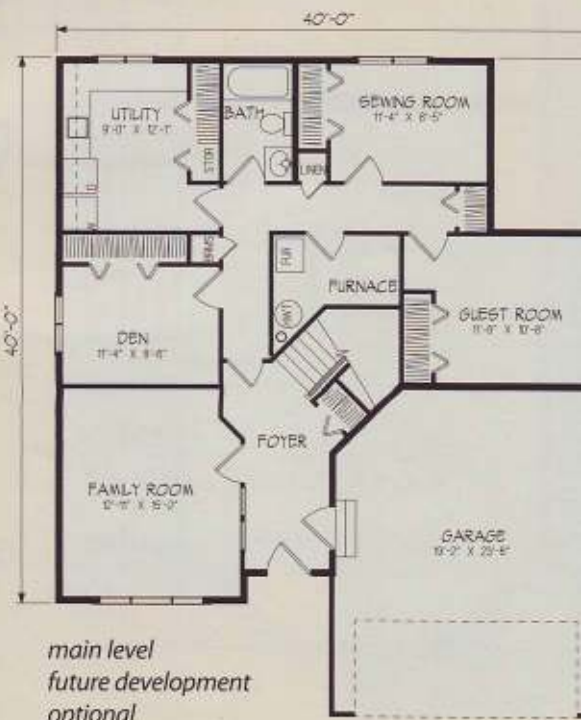
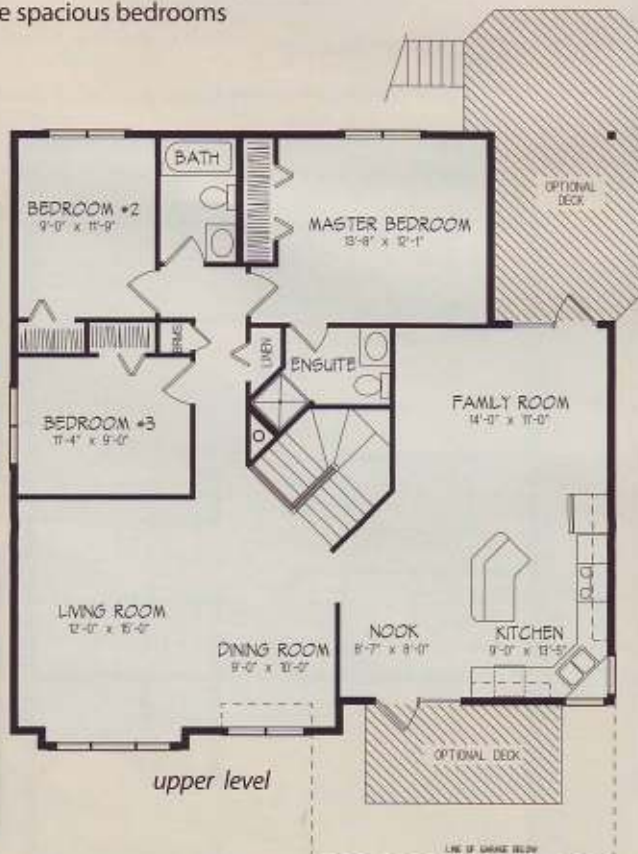


# the Savona



1474 sq. ft.

- Front sun deck located off kitchen/nook area
- Living room with optional fireplace
- Family room at rear leads to a covered deck
- Three spacious bedrooms







main level

- 1-1/2 storey home with large master suite on main level
- Kitchen has island work station/sandwich bar and open dining room
- Utility room and half bath on main level
- Master bedroom has three-piece ensuite and large walk-in closet
- Two upstairs bedrooms share an ensuite with double sinks



upper level

1487 sq.  
Main 1031 sq.  
Upper 456 sq.



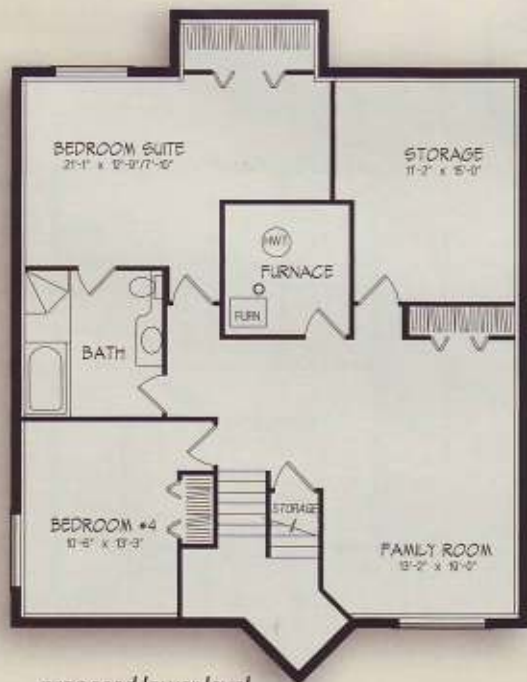


# the Prescott



1496 sq. ft.

- Angled front entry with clearstory windows opens onto central hallway with skylights and plant ledges
- Nine-foot high walls highlight vaulted ceilings
- Double vaulted master bedroom offers luxurious ensuite with soaker tub and shower
- Large walk-in closet with plant shelf above
- Main floor laundry

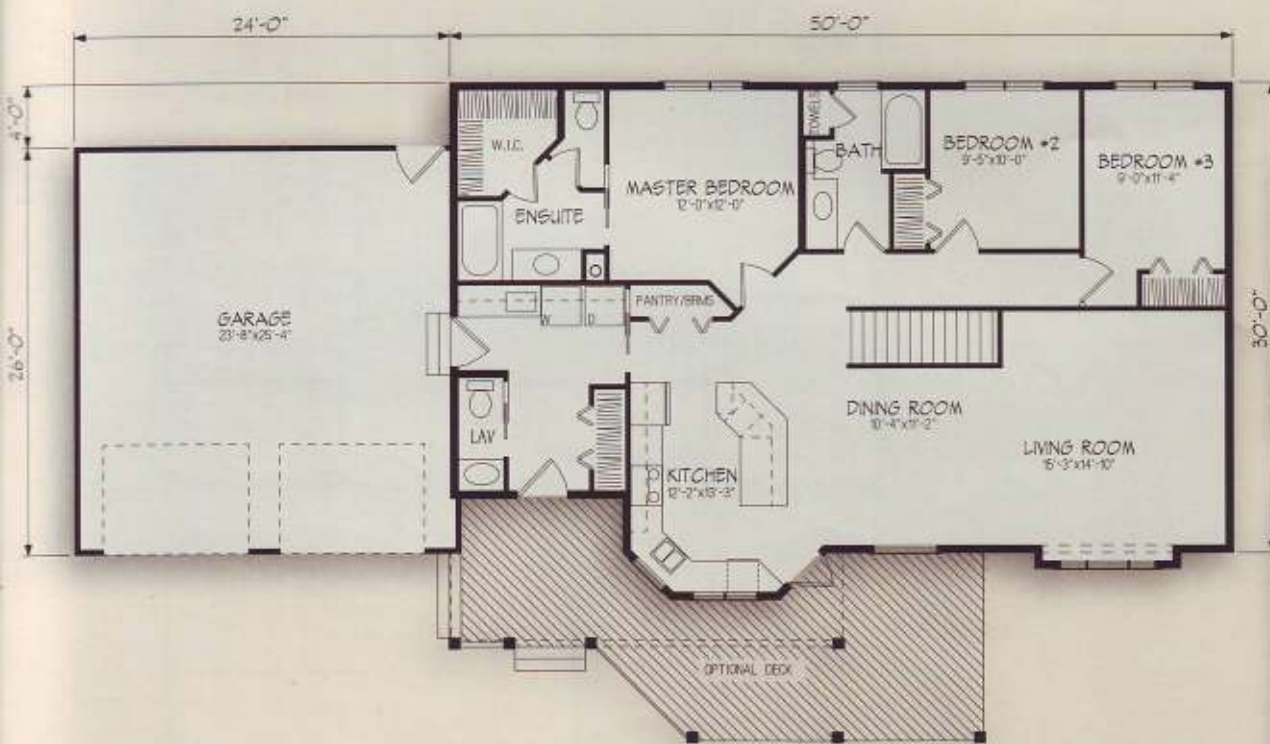






- Spacious open design
- Living areas to front of home
- Bayed kitchen with lots of counter space and an eating bar
- Front covered deck
- Master bedroom has large walk-in closet and ensuite

1501 sq.





# the Sydney

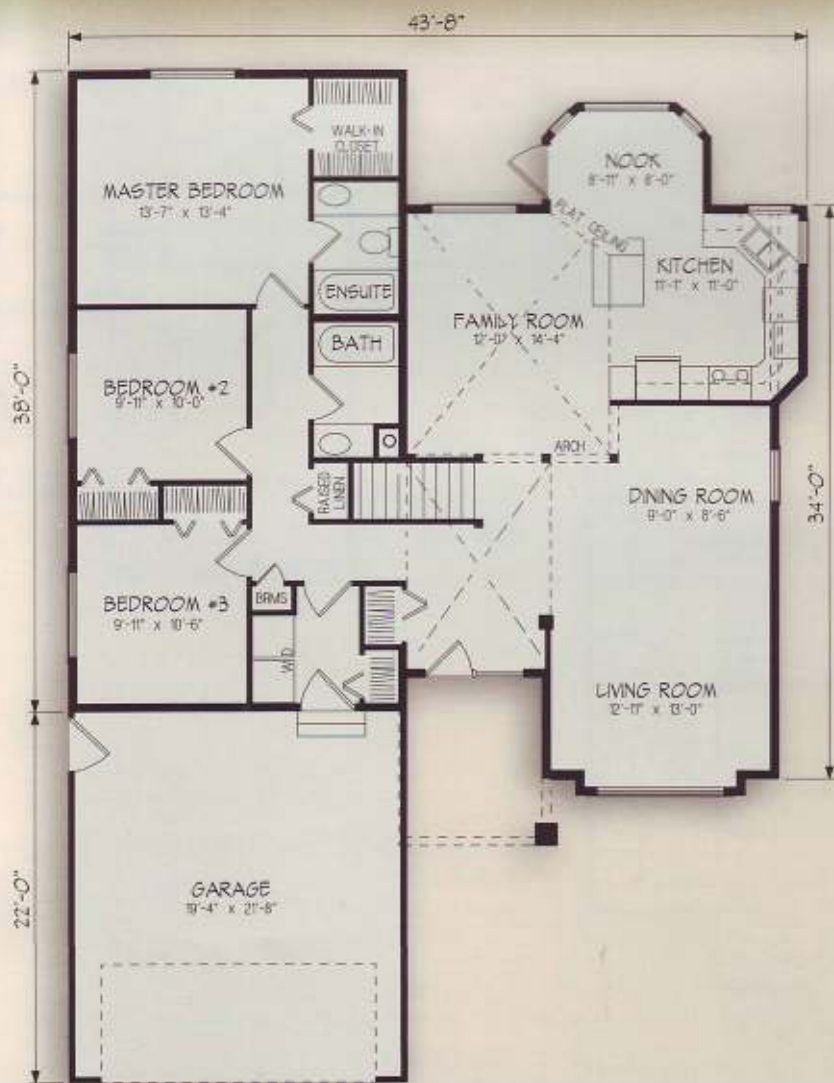


1502 sq. ft.

- Simple but dramatic features grace this elegant walkout bungalow
- A wall of glass windows enhances the view to the back of the home
- Utility room and a home office are convenient on main level







- Front foyer with raised ceiling leads to the formal living and dining rooms
- Vaulted ceiling in family room
- The nook adjoining the kitchen accesses an optional rear deck
- Two-car garage provides secure access to a utility room
- Three good-sized bedrooms are separate from the living spaces
- Central stairs with decorative arches add the finishing touches to this home

1544 sq.





# the Gatsby



1557 sq. ft.  
Main 806 sq. ft.  
Upper 751 sq. ft.

- Victorian style two-storey with three bedrooms
- Suitable for narrow lots
- Sitting area upstairs with vaulted ceiling
- Spacious foyer
- Covered deck across front
- Main floor den
- Main floor laundry and half bath





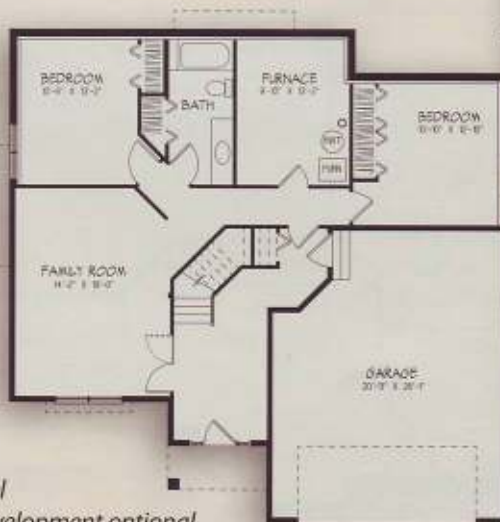


1559 sq.

- Ideal lakefront home, well suited to a sloped lot
- Grade-level entry allows for dramatic use of windows on the main level to capture spectacular views
- Unique angled hallway offers privacy to three spacious bedrooms
- Wood-turned railing accents the angled stair, located in the center of the home
- Dining room opens to sunny, wrap-around deck



upper level



main level  
future development optional





# the Kallie



1560 sq. ft.

- A striking, contemporary design
- Raised ceiling at the foyer and stairwell adds drama to this deluxe home
- Nine-foot ceilings throughout main level with ten-foot ceiling at raised area
- Extra windows at rear of this home make it ideal for sloped lot walk-out development
- Private jacuzzi and a large walk-in closet off the master bedroom
- Contemporary kitchen has large pantry, center angular island and plenty of cabinets



proposed lower level  
future development optional





- A contemporary home with a sunny back entry
- Open informal living spaces and nine-foot ceilings
- An open railing leads to future basement development
- Main floor laundry room

1564 sq.



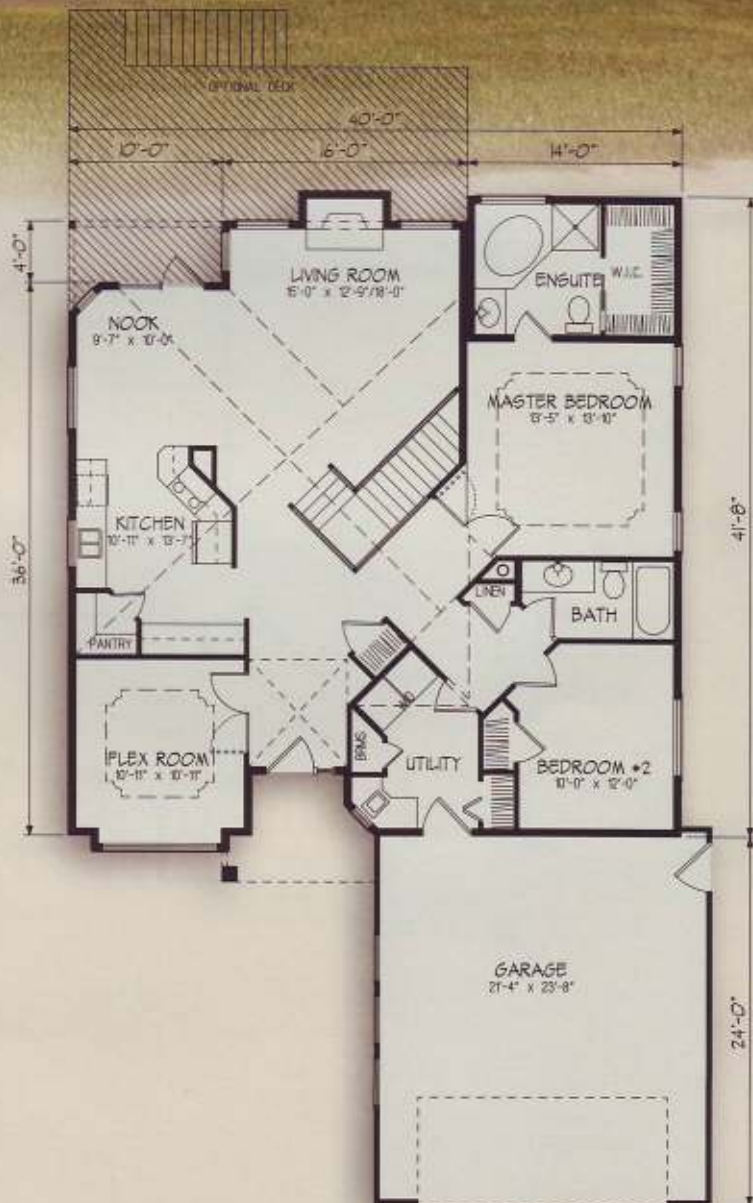


# the Brooklyn



1576 sq. ft.

- A bright, open design with expansive vaults and interesting angled floor plan
- Two bedrooms plus a flex room for den, hobbies or an extra bedroom
- Open living space and optional fireplace in living room
- Kitchen has center cooking island, walk-in pantry and a cozy dining nook with garden door to deck
- Large utility room with broom closet
- Master bedroom has full ensuite, a walk-in closet and coffered ceiling







main level



upper level

- The design of this impressive three-bedroom home assures comfort and spacious living for a busy family
- Master bedroom boasts a full ensuite and walk-in closet
- Main floor includes a U-shaped kitchen with island and an enclosed laundry room

1607 sq.  
Main 922 sq.  
Upper 685 sq.





# the Premiere

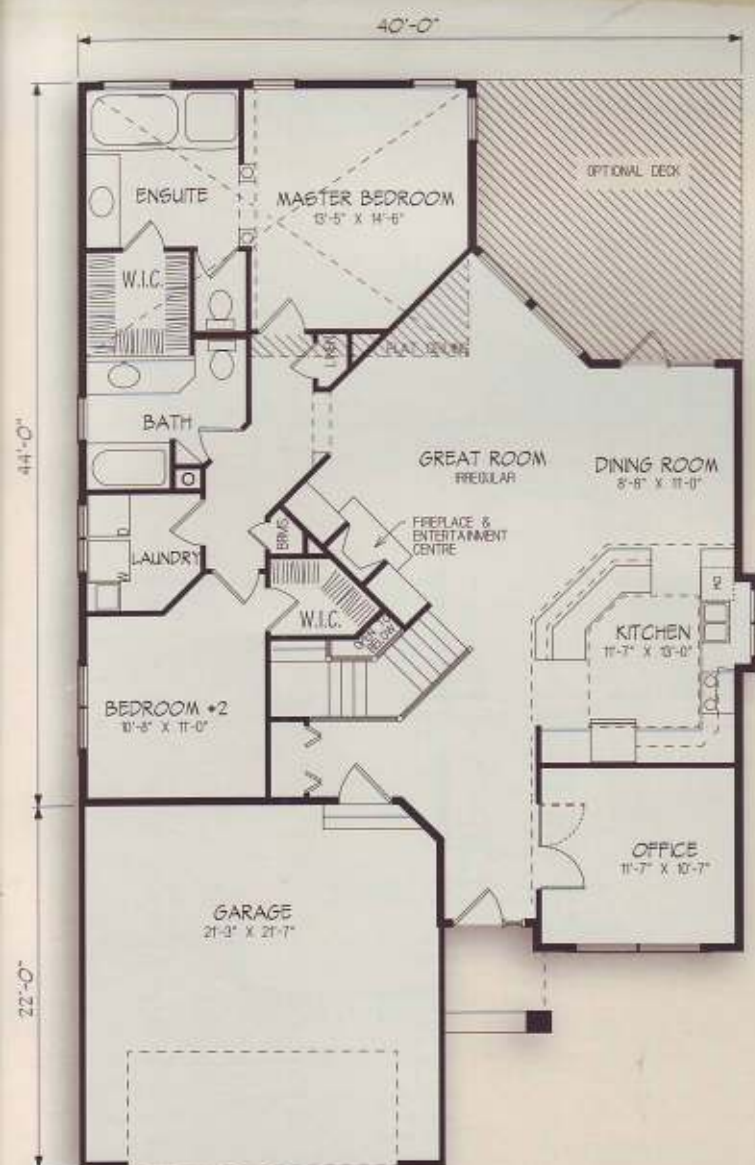


1624 sq. ft.

- High volume cathedral ceilings span the kitchen, dining room, family room and master bedroom
- Nine-foot high walls throughout
- Plant shelves, custom build-ins
- Open stairway with curved half-wall
- Exceptional master suite features large walk-in closet, garden tub, skylight, custom windows and patio door to deck
- Den can be converted to third bedroom







- Innovative executive style bungalow
- Interesting, angled living room offers handsome fireplace with entertainment center and elliptical top windows
- Unique staircase adds intrigue to large entrance hall
- Open great room and dining room to easily accommodate large gatherings
- Well-planned kitchen with boxed window and large island work space
- Master suite with columned entrance to whirlpool bath and walk-in closet
- Efficient laundry room close to the bedrooms

1673 sq.





# the Medford



1709 sq. ft.

- Kitchen, dining and family room create a spacious activity area
- Foyer features open-rail stairs
- Family room is beautifully accented by massive corner fireplace
- Double doors open to spacious master bedroom with his/her closets and private ensuite
- Large, double garage and novel back sundeck perfectly compliment the Medford layout





# the Cheyenne



- The distinctive ranch styling and wrap-around deck make this home ideal for acreage or farm properties
- Features a vast vaulted living room with feature fireplace
- Practical shared entry with utility area and plenty of closet space

1723 sq.





# the Hartwell

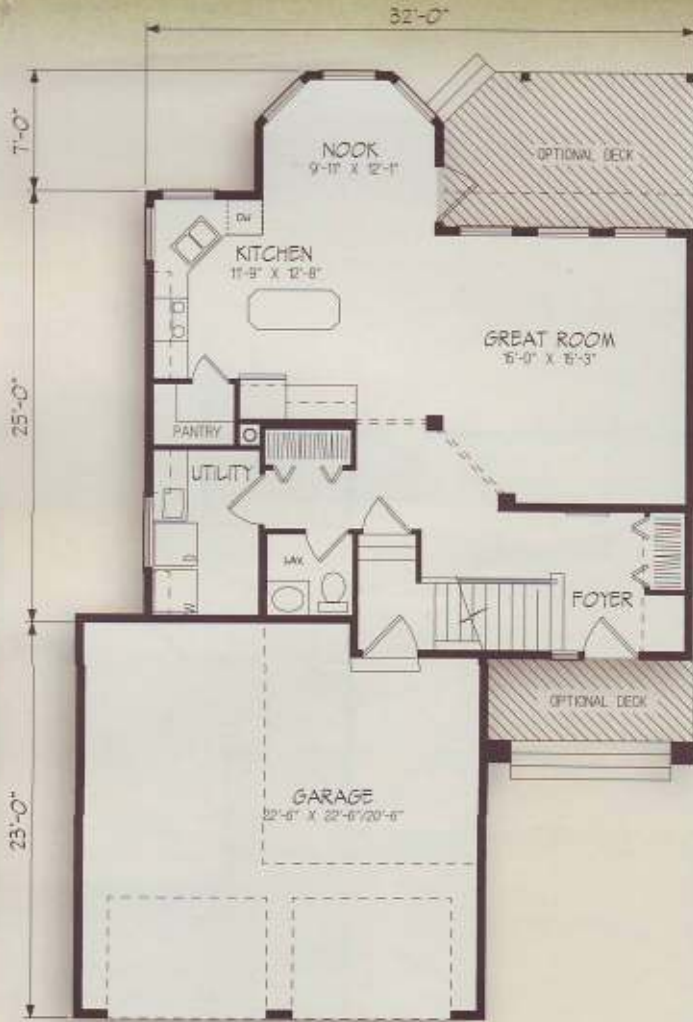


1772 sq. ft.  
Main 879 sq. ft.  
Upper 893 sq. ft.

- This two-storey plan is perfect for narrow home sites
- Contemporary stucco detailing enhances lofty front entrance
- Kitchen has sunny, bayed dining area
- Two-storey entry open to interesting staircase and bonus room above
- Oversized shower, separate vanity and walk-in closet grace the master suite
- Spacious secondary bedrooms



upper level



main level

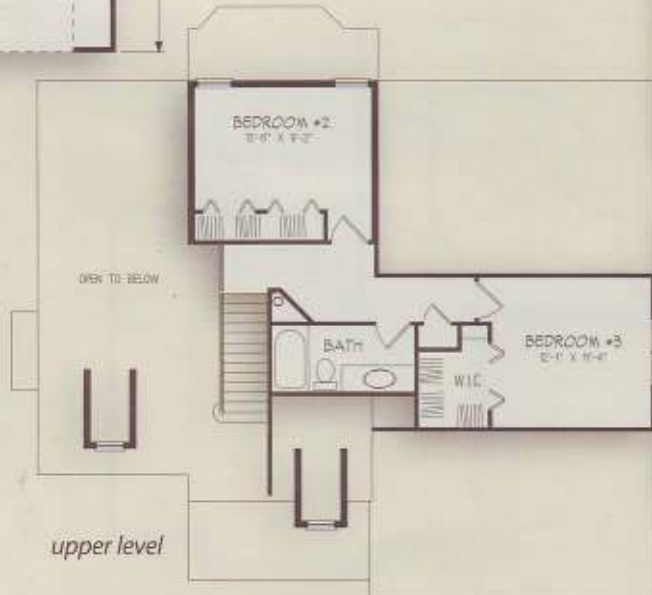




main level

- Charming front porch and dormer windows distinguish this cozy cape-cod home
- Main level features an open, vaulted living and dining room
- Two generous bedrooms with plenty of closet space grace the upper level

1779 sq.  
Main 1258 sq.  
Upper 521 sq.



upper level





# the Maidstone



1795 sq. ft.  
Main 1352 sq. ft.  
Upper 443 sq. ft.

- Outstanding new-generation bi-level with bold roof lines and attractive angled entry
- Excellent plan for a corner lot – offering street appeal from both directions
- Flared staircase leads to open, expansive living area
- Master bedroom with relaxing bay area and luxurious ensuite
- Loft area over garage is perfect for a second bedroom, studio or home office, offering ample natural light and cozy window seat
- Vaulted ceiling and open staircase allow for spectacular view from above



proposed lower level  
future development opti





1800 - 3400 sq. ft.

*"In 2001 we purchased a Nelson Home package. Construction began in early 2002. We were very impressed with the product. Such items as siding, shingles, windows and doors were all of excellent quality. We were happy to have assistance, while making our choices of these items, from Michele and Ike, our knowledgeable Nelson representatives. There were a variety of good options to pick from in each item.*

*Delivery of the supplies was on time. We noted the perfect fits of the pre-constructed framing sections.*

*We are very happy with our home and have had many compliments on its appearance both inside and out."*

*Larry Heth and Bettie Weigl*

\*NOTE: Artist's renderings in this catalogue do not always reflect actual home specifications.

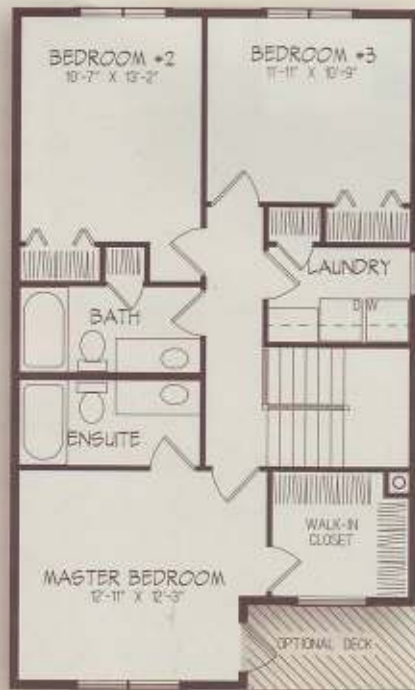


# the Townsend

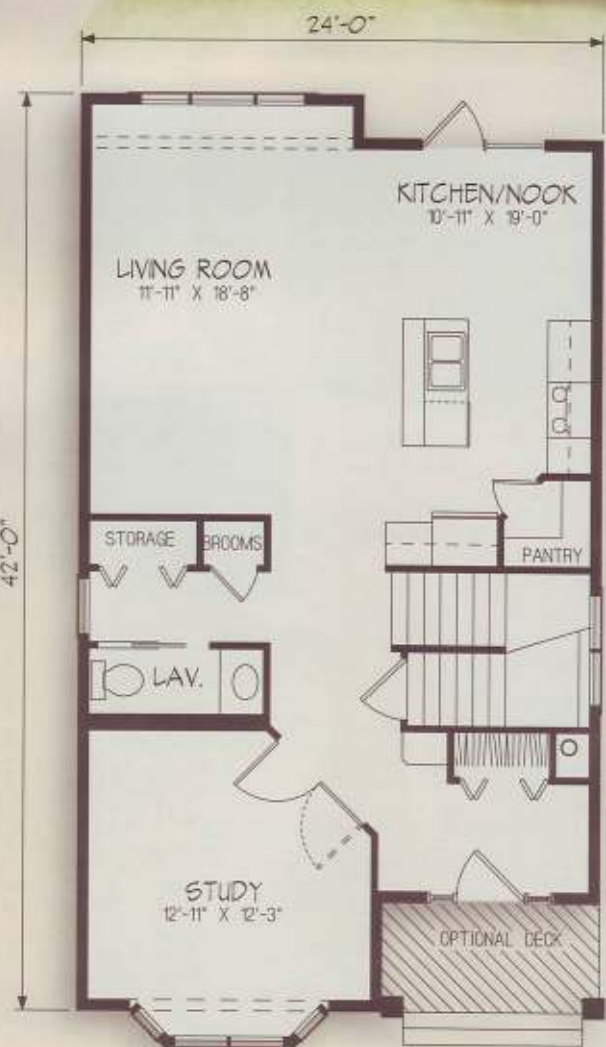


1808 sq. ft.  
Main 948 sq. ft.  
Upper 860 sq. ft.

- Charming two-storey home with Victorian styling is great for narrow lots
- Welcoming foyer with angled hallway leads to a bright, bayed study
- Open living and dining area provides a spacious feel
- Kitchen with view to the back yard has cozy nook and center island
- Master bedroom, with deck off the front, has private ensuite and walk-in closet



upper level



main level





1849 sq.

- Expansive ground-level entry with walk-in coat closet
- French door opens into a sunny den/office with high ceilings and a clearstory window
- Nine-foot high walls throughout lower level
- Dramatic stairwell leads up to living area and formal dining room
- Master bedroom has private ensuite and large walk-in closet



main level  
future development optional





# the Vector



1897 sq. ft.  
Main 1062 sq. ft.  
Upper 835 sq. ft.

- Spacious foyer with open rail stairs
- A casual kitchen/nook and family room at the rear for easy access to the back yard
- The upper level is open to the vaulted living and dining areas
- Two generous bedrooms and a spacious master suite upstairs
- The modern ensuite is full of natural light



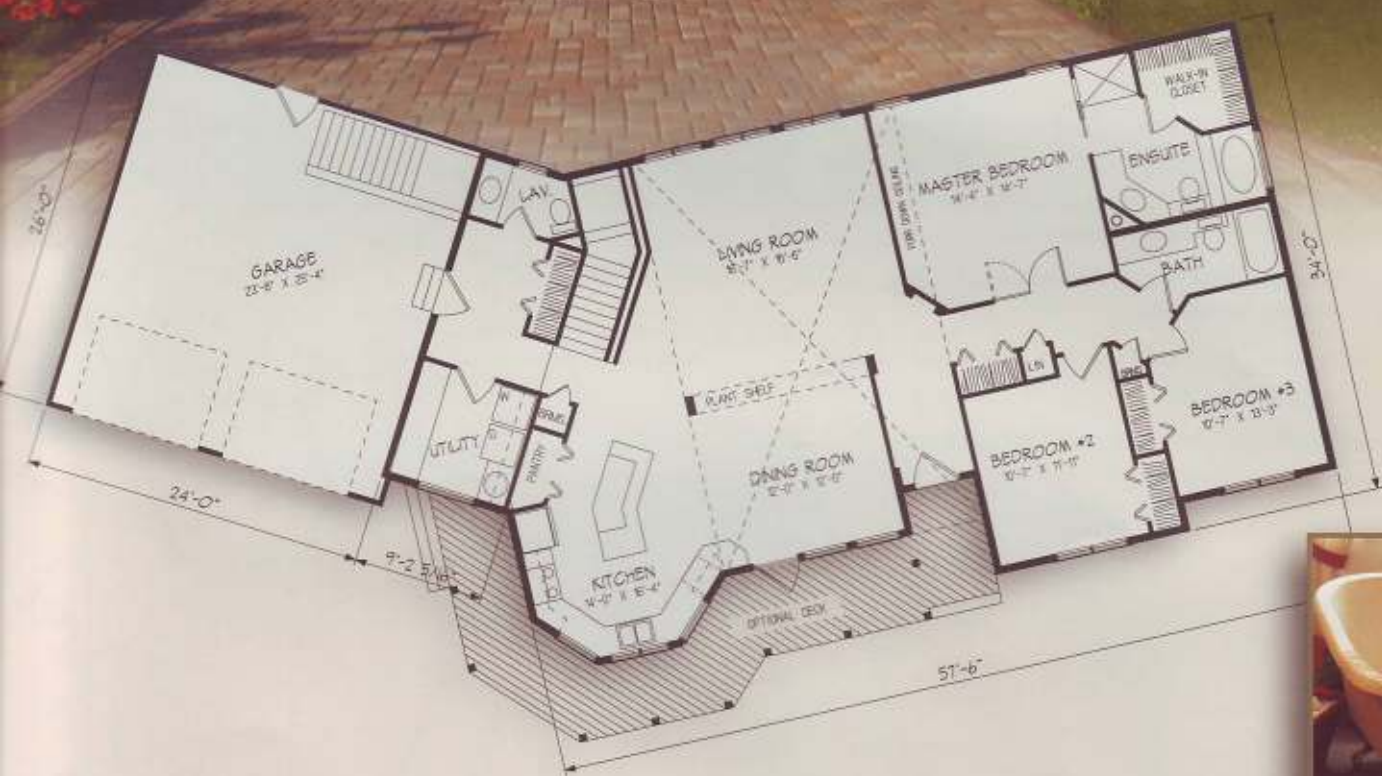
main level



upper level







1908 sq.

- Inviting wrap-around front deck
- Cathedral ceiling to living and dining rooms
- Large bay kitchen with island and eating bar

- Spacious rear entry with utility room and half bath
- Master bedroom with walk-in closet and full ensuite





# the Austin-Ray



1999 sq. ft.  
Main 1485 sq. ft.  
Upper 514 sq. ft.

- The spacious foyer, framed by two towers, opens to an expansive vaulted great room
- A huge master bedroom offers a full ensuite with window-alcove tub
- The deluxe island kitchen is complete with a nook and large pantry
- Raised reading/media nook on upper level.



upper level



main level







upper level

- Modern character home with covered front veranda and attractive arched entryway
- Bright, open kitchen, dining and great room with optional fireplace
- Living areas to the back, offering privacy and garden view
- Open studio area with large window to front; great area for computer and hobbies
- Heritage-style ensuite with pedestal tub



main level

see photos page 122 & 123

2021 sq.  
Main 1065 sq.  
Upper 956 sq.





# the Sheffield



2052 sq. ft.  
Main 1532 sq. ft.  
Upper 520 sq. ft.

- Gabled exterior enhances this 1-1/2 storey plan
- Vaulted ceiling over living room and open stair to upper level
- A formal dining room complete with coffered ceiling
- Good separation between main floor bedrooms
- Upper level has two extra bedrooms and bath
- Storage room for toys, sports equipment, etc.

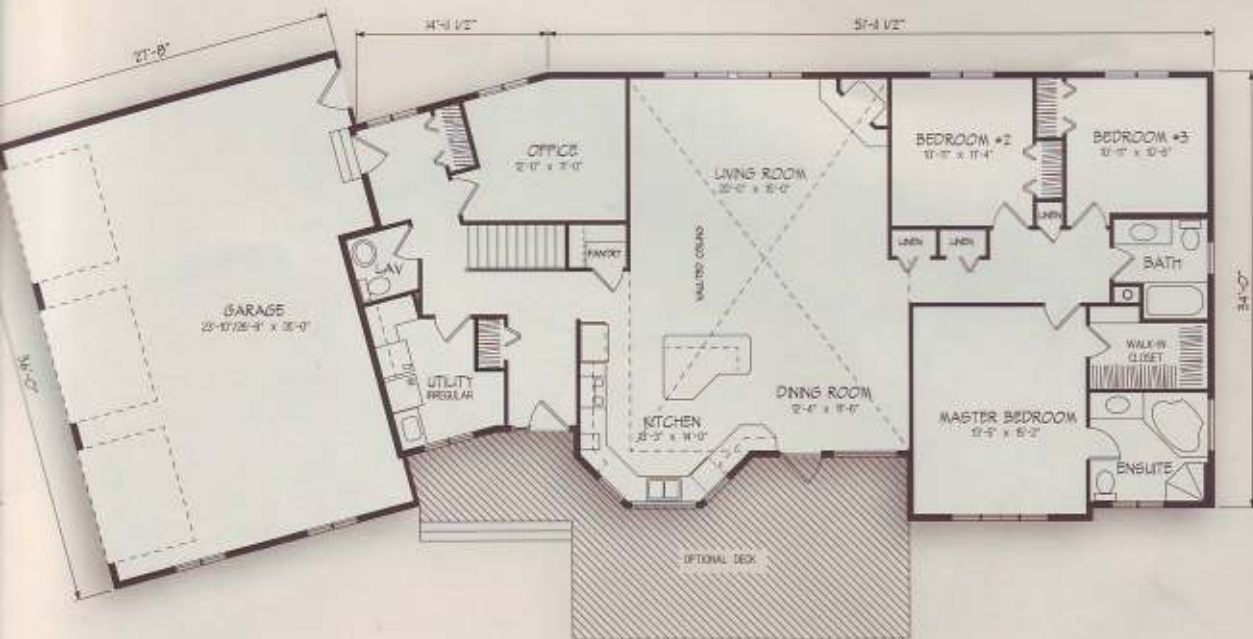






- Bright, open and vaulted living area
- Office space off the rear entrance separates business and living spaces
- Spacious kitchen with eating island/workstation
- Large laundry/utility room
- Large master suite with walk-in closet and ensuite

2076 sq.





# the Phoenix



2082 sq. ft.

- South-western style stucco details grand front entrance
- Ten-foot high ceiling at front foyer through to living room
- Elegant columns surround living room
- Comfortable open kitchen becomes focal point of home
- Built-in computer desk/shelves in third bedroom
- Spacious dropped rear entrance from garage







2136 sq.  
Main 1166 sq.  
Upper 970 sq.

- Charming two-storey home, well suited for a narrow lot
- Spacious front foyer with easy access to the staircase, leads to impressive view from upper level
- Great room features expansive windows for a view to the courtyard
- Kitchen is fabulous, with plenty of natural light, center island, convenient eating bar and walk-through pantry
- Private master bedroom features walk-in closet and spacious ensuite with a soaker tub and shower
- Second and third bedrooms have private entrances to bathroom





# the Ashmont



2214 sq. ft.  
Main 1562 sq. ft.  
Upper 652 sq. ft.



- Comfortable country-style exterior with dormers and wrap-around porch
- Bright, open living room is defined by elegant columns and vaulted ceiling lines
- Roomy country kitchen with large island and serving bar
- Main floor master suite offers a large walk-in closet and ensuite
- Open railing at upper floor landing views dining area below







- Open vaulted ceiling makes this a gorgeous home
- Large U-shaped kitchen boasts ample cabinets and opens to eating nook and family room
- Secure access from garage to home
- Large master bedroom features walk-in closet and ensuite including jacuzzi tub
- Second storey loft and hall have open views into family and living rooms

2247 sq.  
Main 1277 sq.  
Upper 970 sq.



main level

upper level



# the Sienna



2307 sq. ft.  
Main 1083 sq. ft.  
Upper 1224 sq. ft.

- Elegant two-storey, three-bedroom home
- Covered front deck with optional glass rail; large open foyer
- Private dining nook with bayed windows off kitchen
- Angled cooking island with raised ledge for eating
- Optional fireplace in great room
- Spacious den on main level
- Upper level features wood-turned railings and impressive view to below
- Master bedroom with luxurious ensuite and walk-in closet









# the Winston

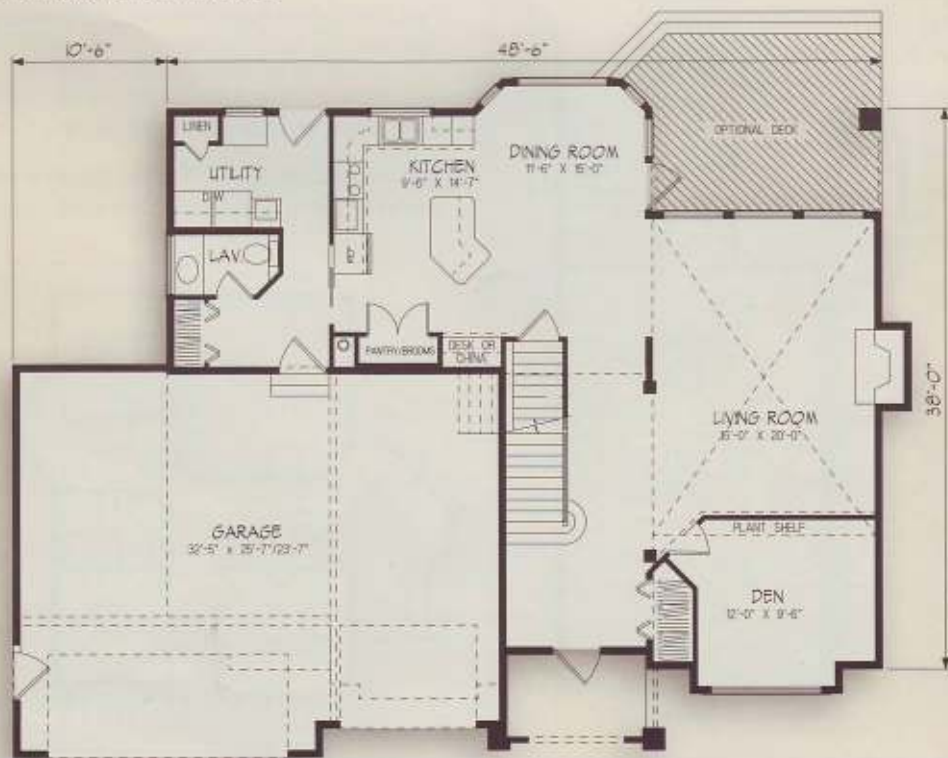


2399 sq. ft.  
Main 1324 sq. ft.  
Upper 1075 sq. ft.

- Three-car garage tucked back for desired street appeal
- Two-storey entry leads to a unique staircase
- Spacious, vaulted living room enjoys optional raised hearth fireplace, entry columns, and plant shelf
- Pampering master bath includes: optional two-sided fireplace, jacuzzi tub, double vanity and walk-in closet



upper level



main level









# the Arizona

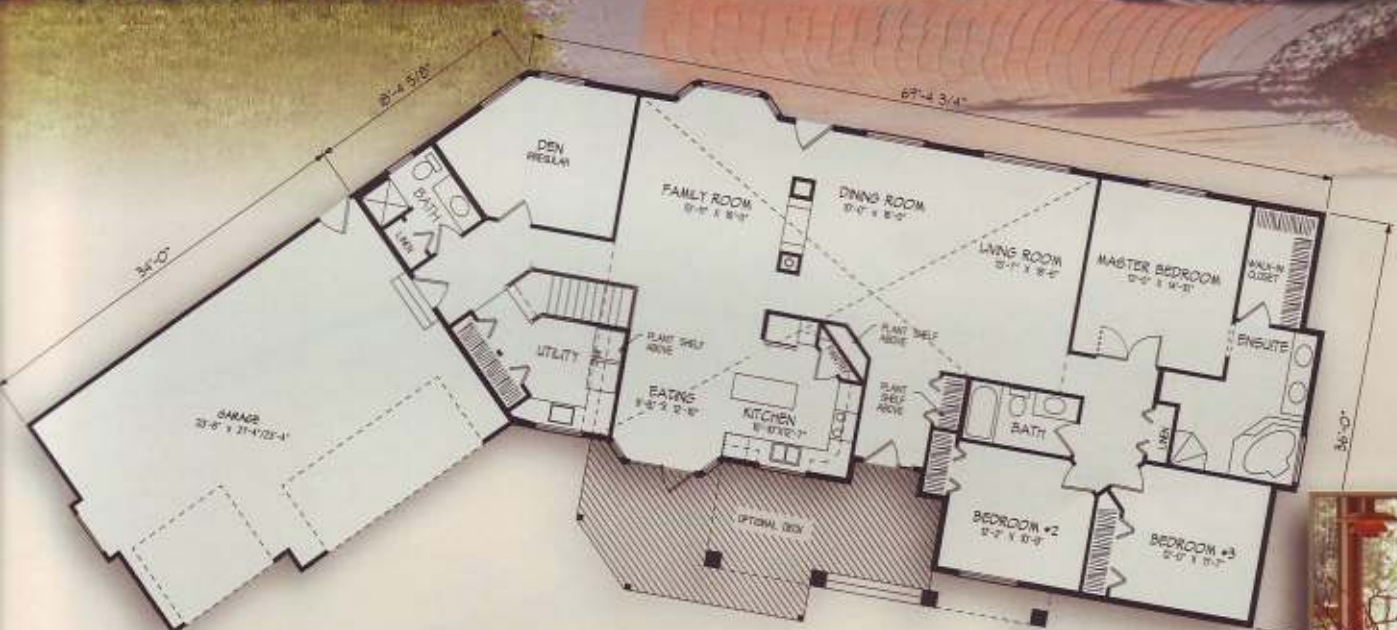


2448 sq. ft.  
Main 1567 sq. ft.  
Upper 881 sq. ft.

- The wrap-around deck and columns give this home a country elegance
- The home office features its own entrance
- The main level master bedroom features a luxurious ensuite and walk-in closet







2451 sq.

- Unique angled garage
- A see-through fireplace separates family room from formal dining and living rooms, all with vaulted ceilings
- Vaulted kitchen with a bright, bay-windowed breakfast nook
- Side entry from the garage with three-piece bath, a large coat closet and utility area
- Master suite includes a luxurious bath and a large walk-in closet
- Large pantry and center island











upper level

- Spacious two-storey family home with a welcoming entryway and a study at the front
- Kitchen with pantry has convenient access to large laundry area
- Private living room with fireplace and view to the back yard
- Luxurious master suite has walk-in closet and private ensuite with corner tub
- Three bedrooms on upper level, plus large bonus room over the double garage



main level

2458 sq.  
 Main 1165 sq.  
 Upper 1293 sq.





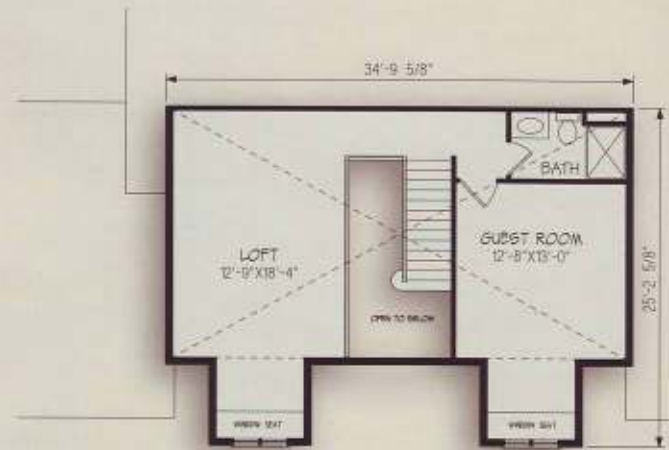
# the Leighton



2506 sq. ft.  
Main 1863 sq. ft.  
Upper 643 sq. ft.



- Traditional cape-cod influence can be seen in this handsome 1-1/2 storey
- Versatile upper level is developed with a loft and guest room
- Generous kitchen area features a center island desk area







- French Country styling in this lovely three-bedroom home
- Open-style plan with living to the back, for privacy and view to the garden
- Master suite features separate his and hers walk-in closets and twin vanities
- Kitchen has raised eating bar
- Main level den
- Large walk-through utility area with pantry and room for a freezer
- Jack & Jill bathroom between the bedrooms in upper loft



2557 sq.  
Main 1687 sq.  
Upper 870 sq.

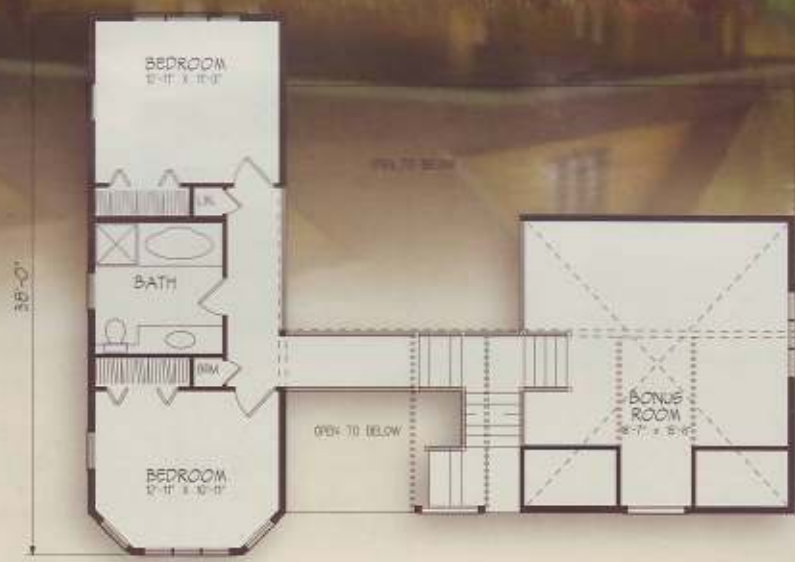


# the Santana

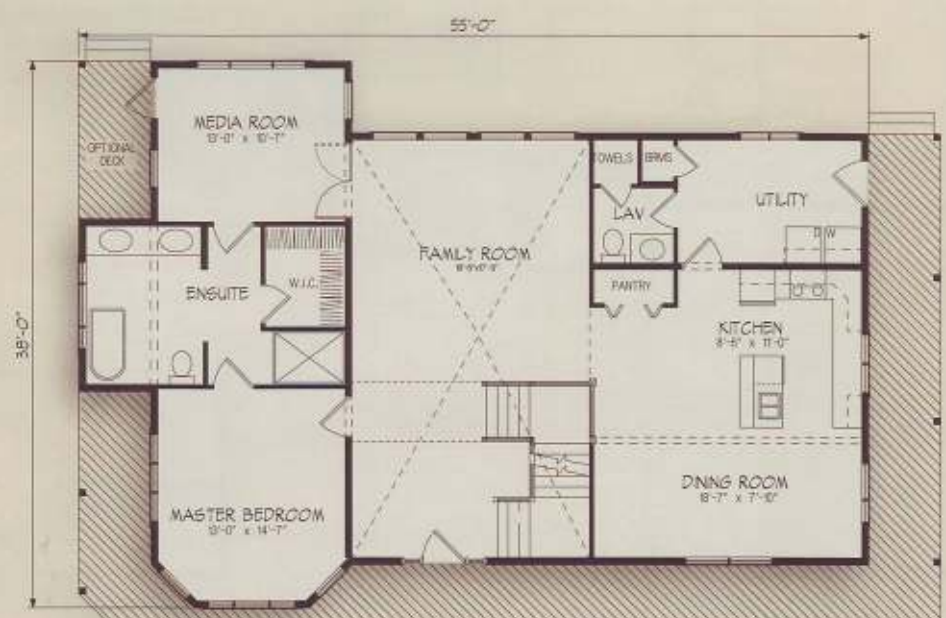


2559 sq. ft.  
Main 1663 sq. ft.  
Upper 896 sq. ft.

- Enjoy the view from your deck morning, noon and night
- Impressive entry foyer leads to bright, vaulted family room
- Private media room/study at the back
- Kitchen has cooking island, pantry and access to utility room and half-bath
- Master suite is flooded with natural light, has a walk-in closet and full ensuite
- Upper level is open to below for spectacular view



upper level



main level





main level



upper level

- The front porch features eye-catching columns
- A two-storey foyer with plant canopy adjoins the office/den
- Nine-foot ceilings to main level
- Vaulted ceilings, drywall sculpted columns and floor-to-ceiling windows in the living room

2748 sq.  
Main 1572 sq.  
Upper 1176 sq.





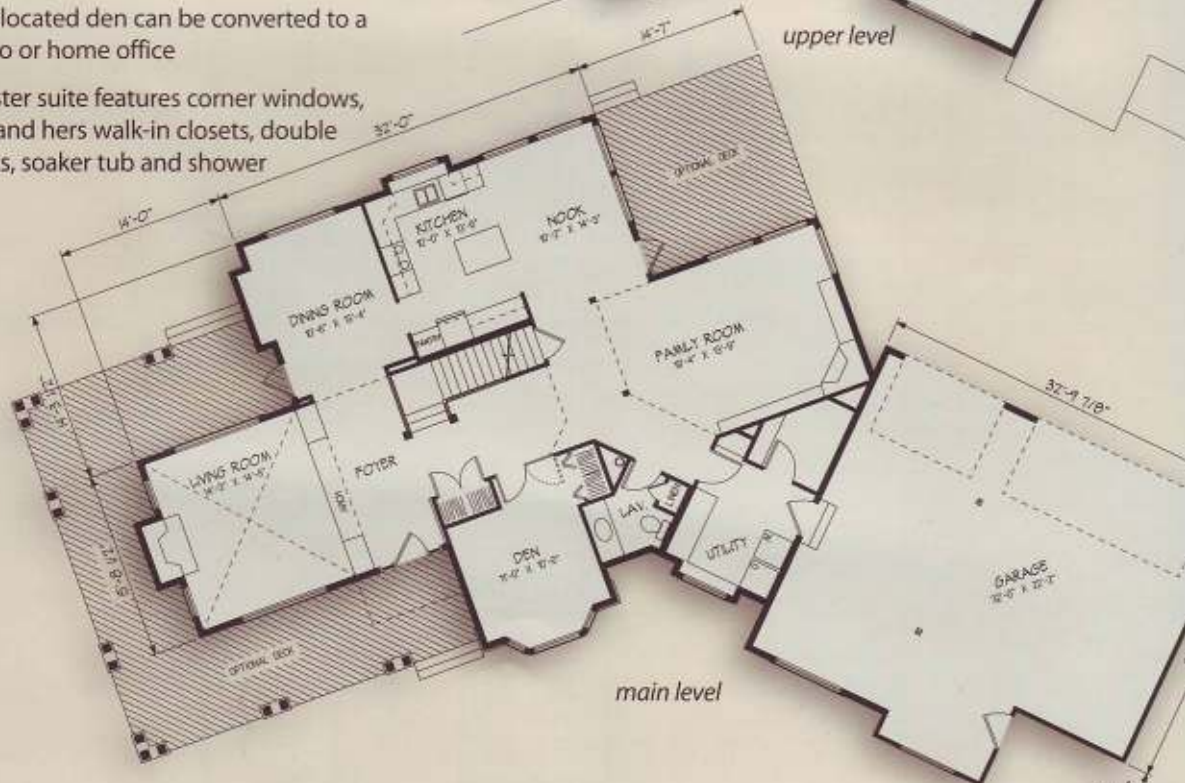
# the Montana



3064 sq. ft.  
Main 1738 sq. ft.  
Upper 1326 sq. ft.

- The covered entrance, wrap-around veranda and striking stone accents make this home perfect for a ranch setting
- Spectacular plan with vaulted ceilings, archways, pillars and a long, open second storey gallery
- Four generous bedrooms on upper level
- A centrally located den can be converted to a studio or home office

- Master suite features corner windows, his and hers walk-in closets, double sinks, soaker tub and shower















Adult Condominium – Alberta



Dr. Hemstock Assisted Living Residence – Alberta



Multi Duplex – Alberta



Duplex: Malmstrom Airbase – Montana



Horizon Village, Adult Housing – Alberta



# the Bayfield



2030 sq. ft.

Unit A

971 sq. ft.

Unit B

1059 sq. ft.

- Two-bedroom units with single car garages
- Open floor plan in living, dining and kitchen areas
- Unit A has a sunny main living area with boxed-out window in living room
- Unit B has bayed window in the second bedroom and a utility room on main level







- Unit A of the duplex has three bedrooms; Unit B has two larger bedrooms
- Master suite in Unit B has walk-in closet and half bath
- Kitchens have pantries and islands

2079 sq. ft.  
 Unit A  
 1027 sq. ft.  
 Unit B  
 1052 sq. ft.



Unit A

Unit B



# the Vermilion



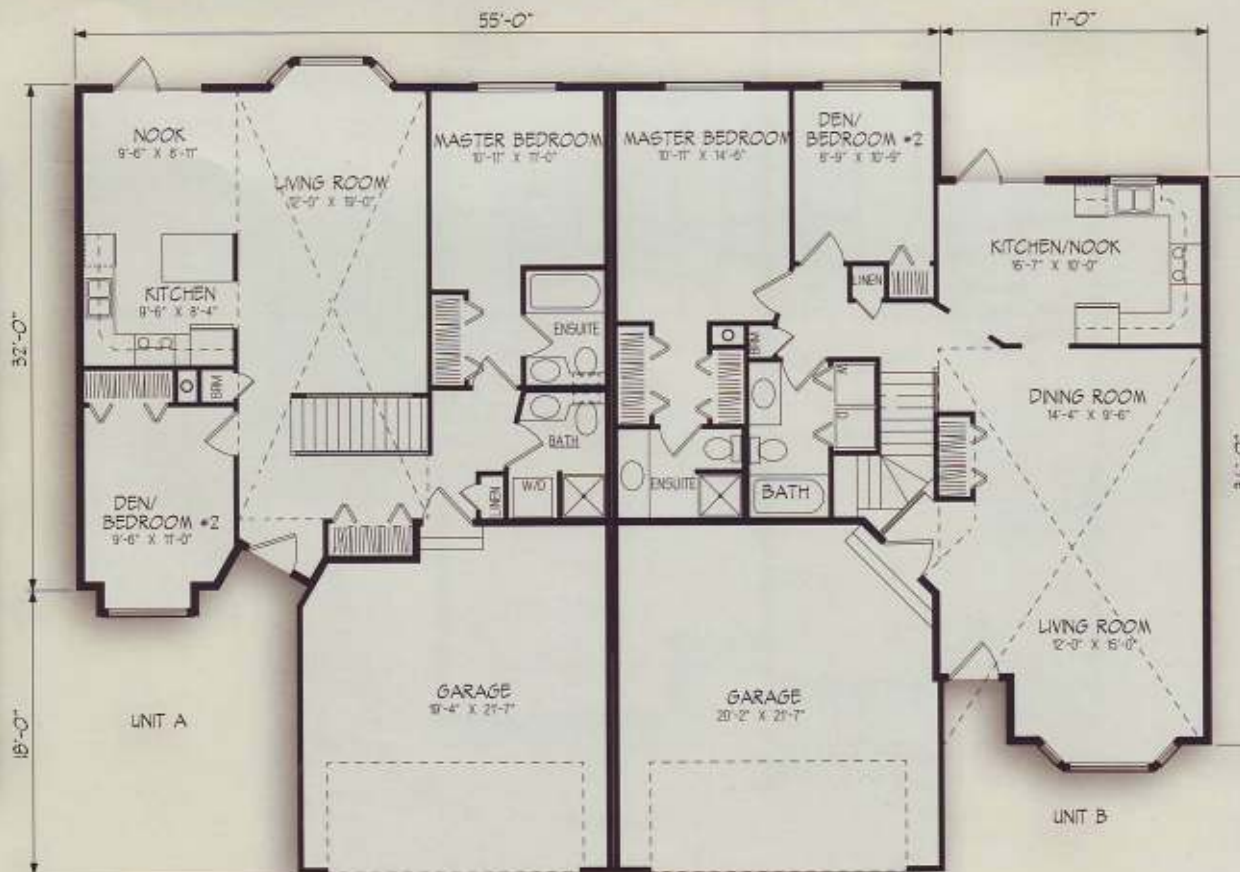
2262 sq. ft.

Unit A  
1043 sq. ft.

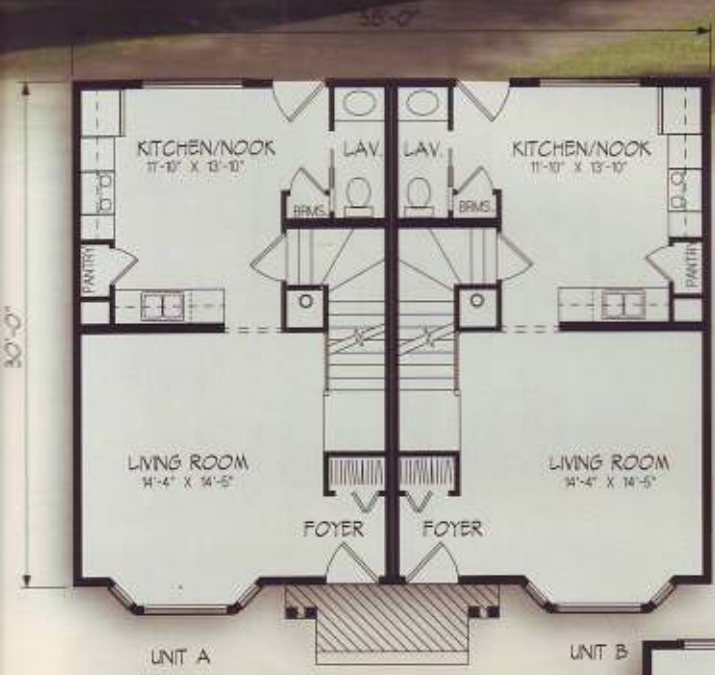
Unit B  
1219 sq. ft.

- Vaulted ceilings in main living area create a spacious look
- Unit A has an island in the kitchen and bayed windows in den
- Full bath in the master bedroom

- Unit B has bayed window in the living room
- Large master bedroom with his and hers closets and three-piece ensuite
- Laundry areas on main level







main level



upper level

- Two-storey duplex with bright, bayed living rooms
- Each kitchen has a pantry and dining nook
- Unit A has three bedrooms upstairs
- Unit B has two large bedrooms
- The master bedrooms each have a walk-in closet and private ensuite

2370 sq.  
 Unit A  
 Main 583 sq  
 Upper 602 sq  
 Unit B  
 Main 583 sq  
 Upper 602 sq





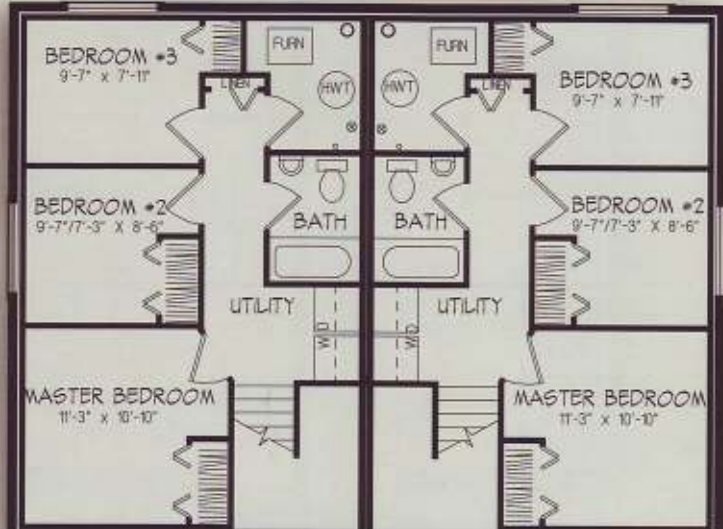
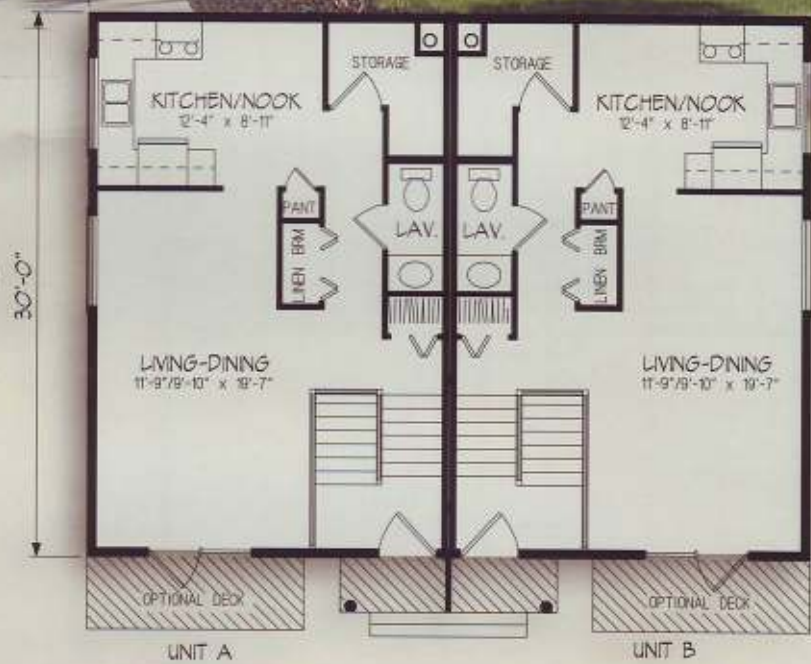
# the Langley



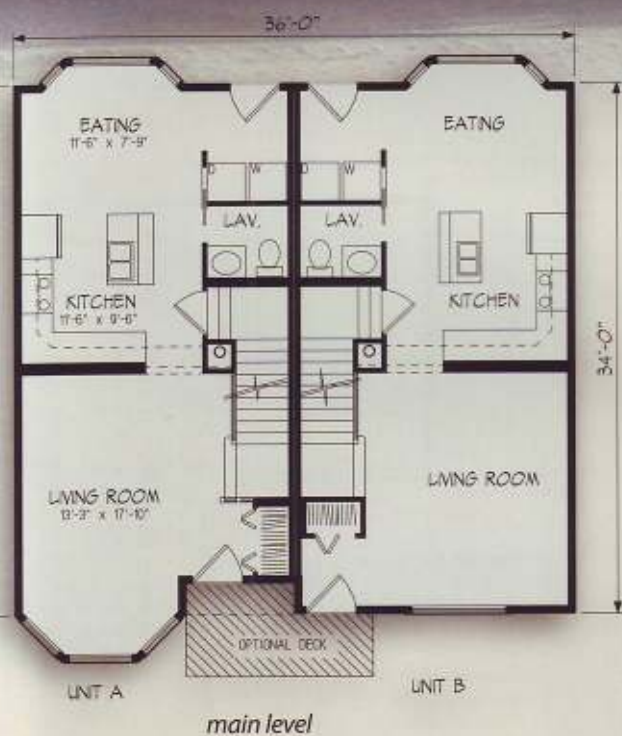
**2400 sq. ft.**  
 Unit A  
 Main 600 sq. ft.  
 Lower 600 sq. ft.

**Unit B**  
 Main 600 sq. ft.  
 Lower 600 sq. ft.

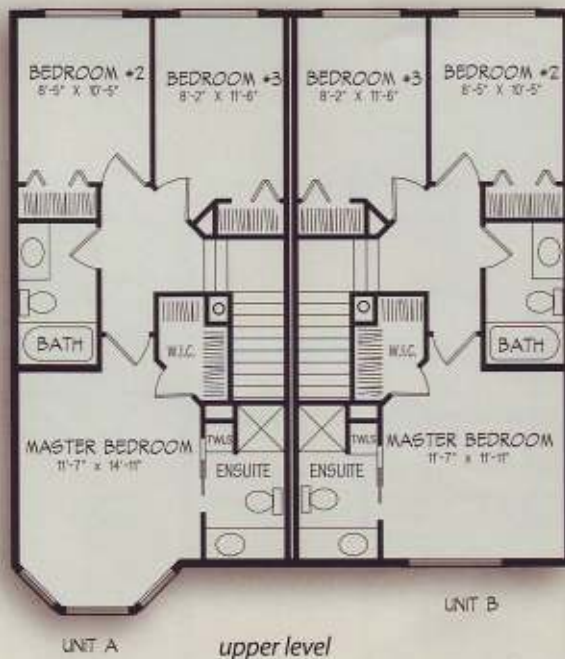
- This duplex has lower level completely developed, with three bedrooms, full bath and laundry on each side
- Kitchen, dining and living areas are on the main level, along with storage and half bath







- Stately duplex with turret and arches
- Large windows in each unit provide plenty of light into the living room and master bedroom
- Laundry and half bath on the main level
- Three bedrooms upstairs, and private ensuite in the master bedrooms



2568 sq.  
 Unit A  
 Main 634 sq.  
 Upper 666 sq.  
 Unit B  
 Main 626 sq.  
 Upper 642 sq.





# the Emerson



2874 sq. ft.

**Unit A**

Main 632 sq. ft.  
Upper 669 sq. ft.

**Unit B**

Main 741 sq. ft.  
Upper 832 sq. ft.

- Two-storey duplex with plenty of street appeal and interesting floor plan
- Open, spacious living areas
- Each unit has three bedrooms and master bedrooms have a private ensuite
- Unit B has unique angled floor plan

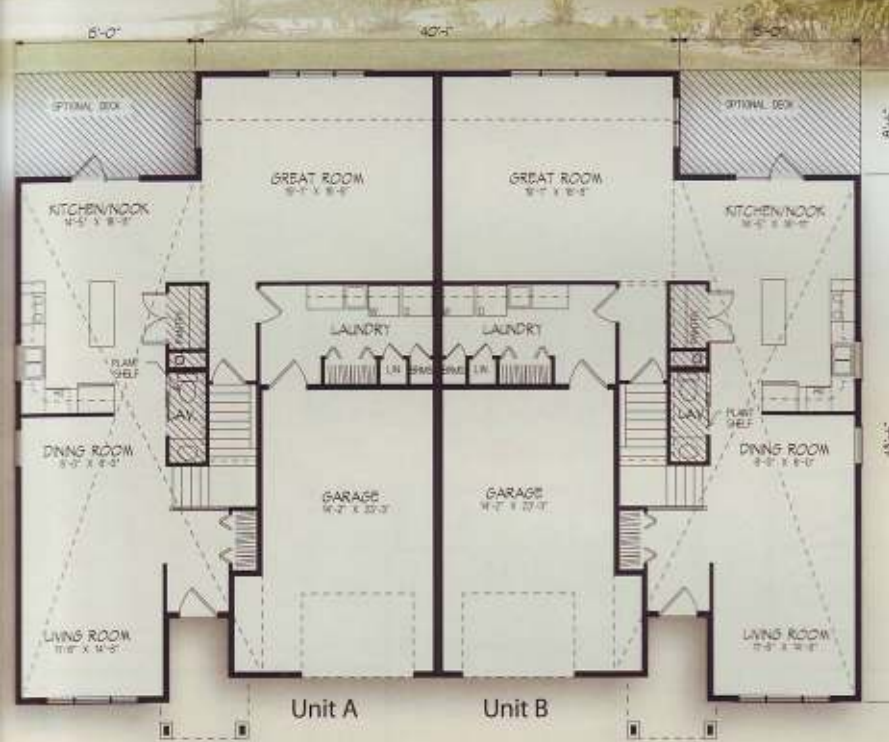


main level



upper level

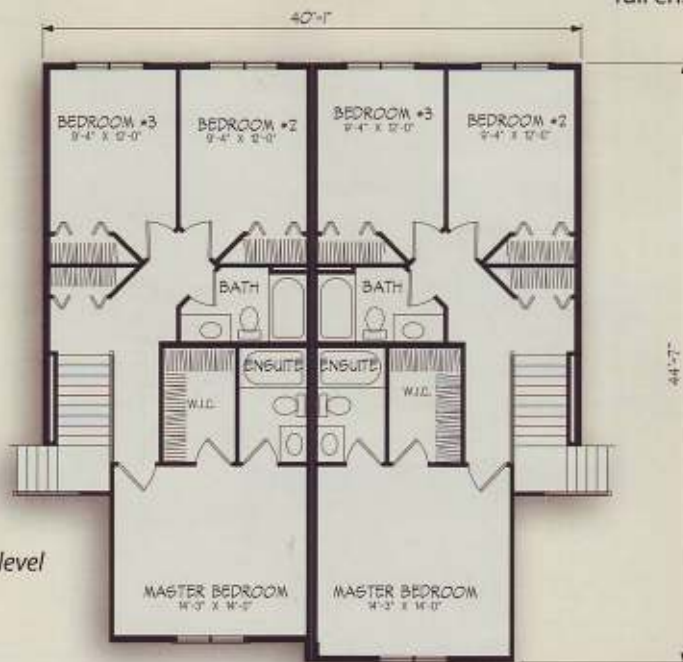




- Vaulted ceilings through kitchen and living areas give this duplex a spacious feel
- Large great room at the back
- Main floor has laundry and half bath
- Spacious kitchens have center island and pantry
- Three generous sized bedrooms upstairs
- Master bedroom features a full ensuite and walk-in closet

4057 sq.  
 Unit A  
 Main 1255 sq  
 Upper 762 sq  
 Unit B  
 Main 1255 sq  
 Upper 785 sq

main level



upper level



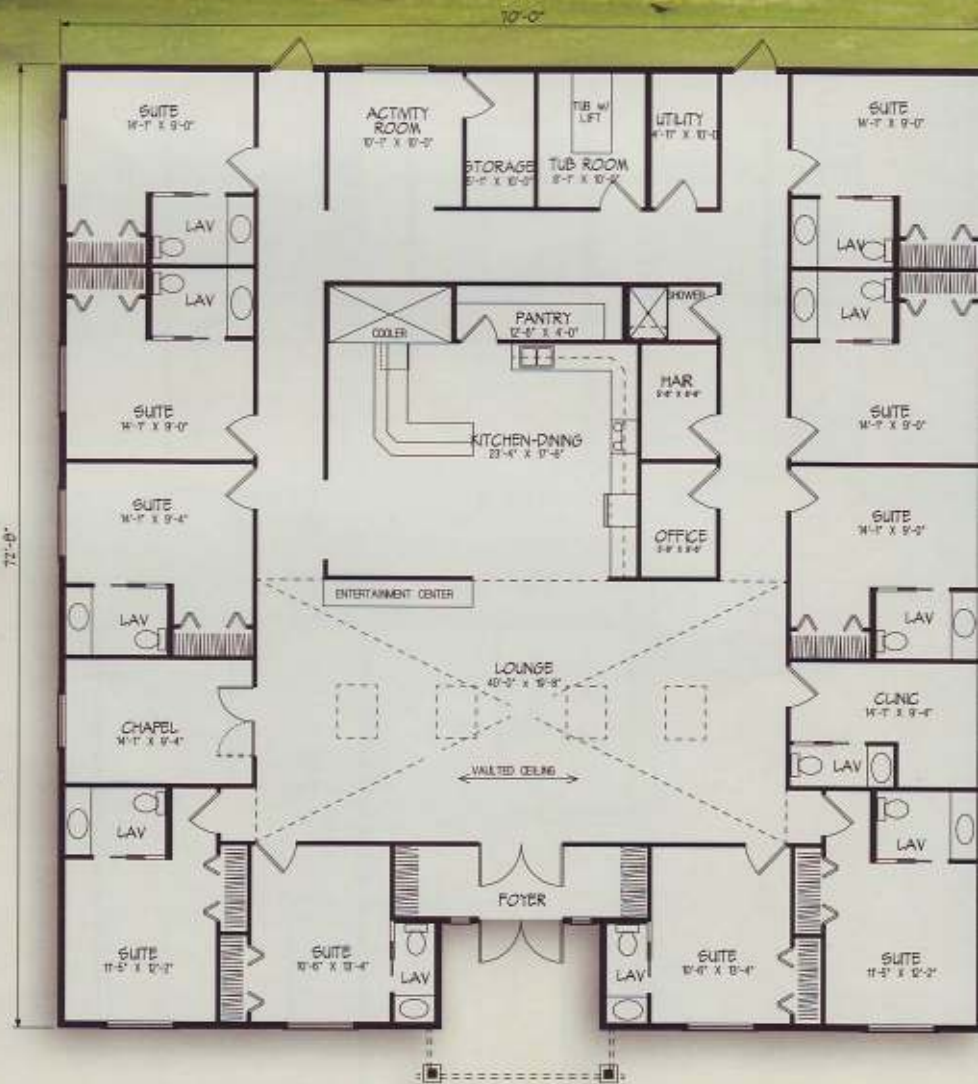


# the Care Home



4991 sq. ft.

- Ten-suite care home offers all the amenities of home and more, in a barrier-free environment
- Activity room
- Medical clinic
- Chapel
- Beauty salon
- Group dining lounge
- Kitchen facility
- Tub room
- Storage room
- Utility room
- Office
- Wheelchair accessible







*"In March 2002 we decided to pursue our dream of a recreational property in the Windermere Valley of British Columbia. We purchased a lot in a rural area overlooking a pristine mountain lake.*

*We selected Golden Oak Developments\* of Calgary for our project management. Rob Morrison, a principal with Golden Oak introduced us to Nelson Homes. This proved to be a winning combination. We reviewed several Nelson standard packages and were able to combine two, and completely satisfy our requirements.*

*With design drawings complete in April and working drawings in May, Nelson Homes went to work with the prefabrication of the cabin and Golden Oak went to work on site preparation and foundation requirements. The package was delivered August 2 and framing commenced August 5. By September 9 all site work, including extras, was completed. With the combination of excellent fabrication work by Nelson and knowledgeable and efficient site coordination by Golden Oak, the project was completed virtually without a hitch. It is really quite amazing to witness your cabin being delivered on a huge tandem truck at the beginning of the month and being able to take pictures of it six weeks later.*

*We wouldn't hesitate to recommend a Nelson Packaged Home for either an urban or rural environment."*

*Eileen & Terry Befus,  
Calgary AB*

*\*Golden Oak Dev. - Authorized Dealer, AB*

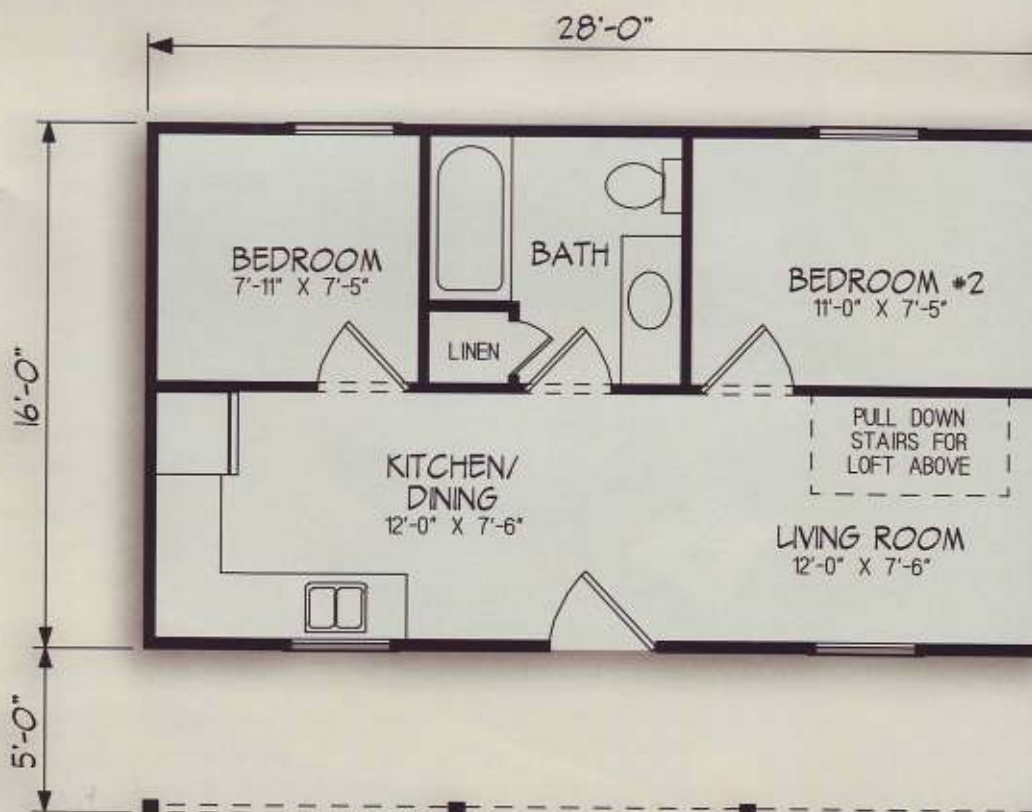
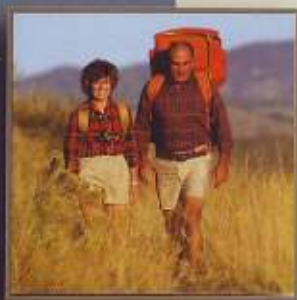


# the Grizzly



448 sq. ft.

- Two-bedroom cottage with loft and full bath
- Great for resort rental, hunting lodge or as a guest cottage

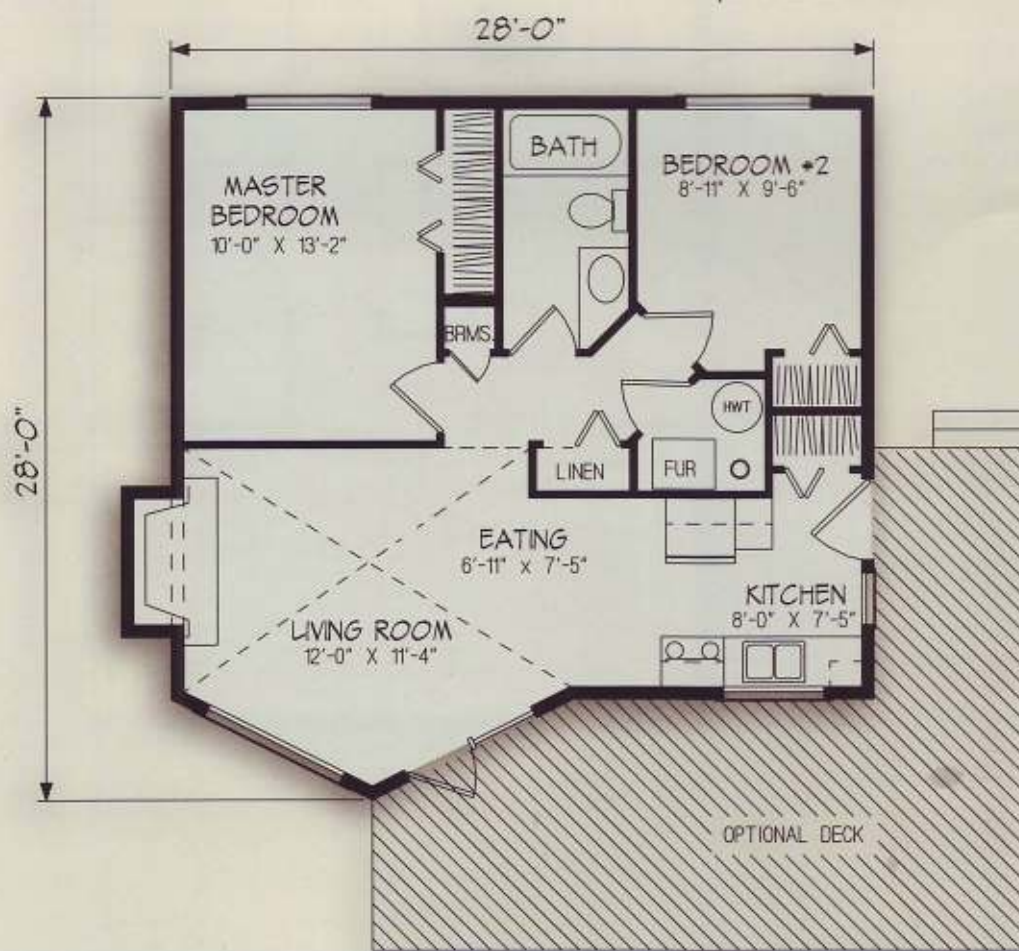






- This intimate chalet boasts a prow front and vaulted living room with optional fireplace
- Access to wrap-around deck from living room patio doors

704 sq. ft.



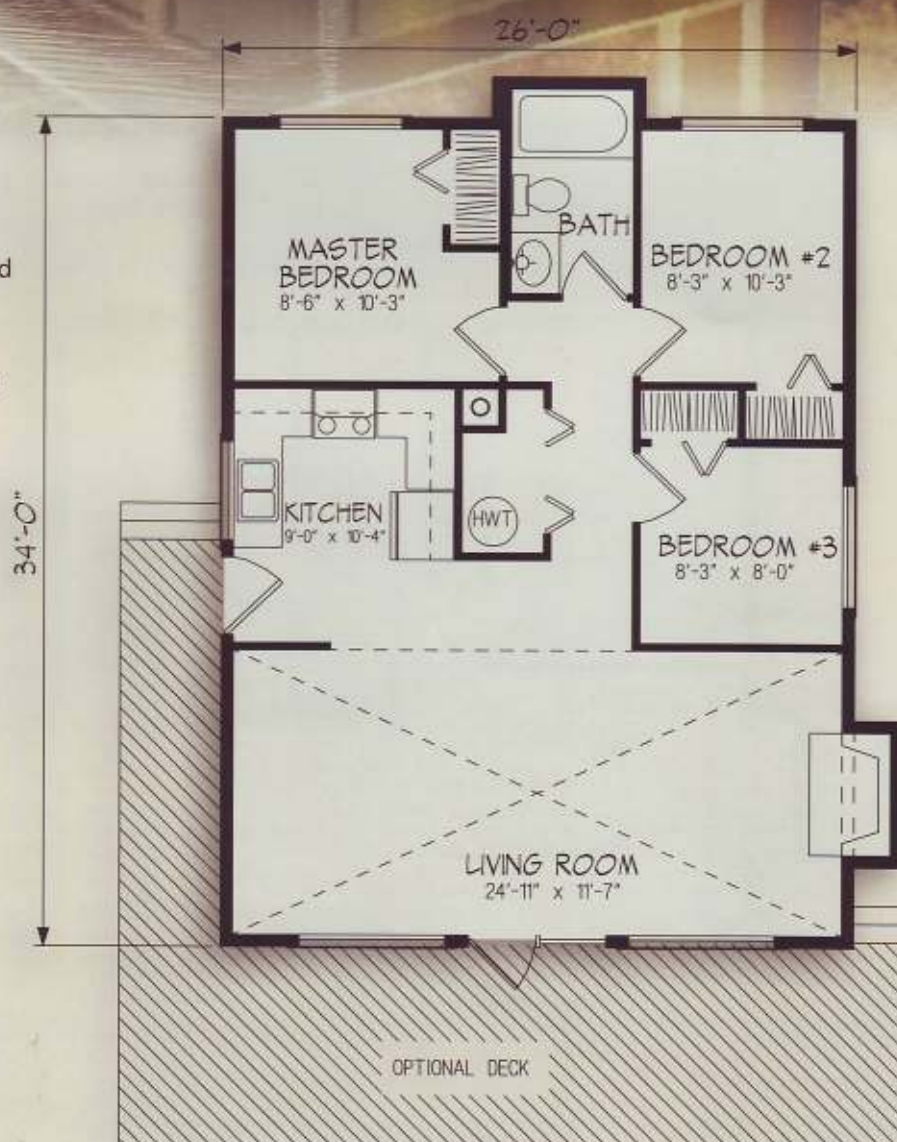


# the Springfield



906 sq. ft.

- Perfect for any setting, this compact cottage offers three bedrooms on one level
- A vaulted living room with raked windows that permit enjoyment of natural light and an outdoor setting
- A side entrance leads to a convenient U-shaped kitchen

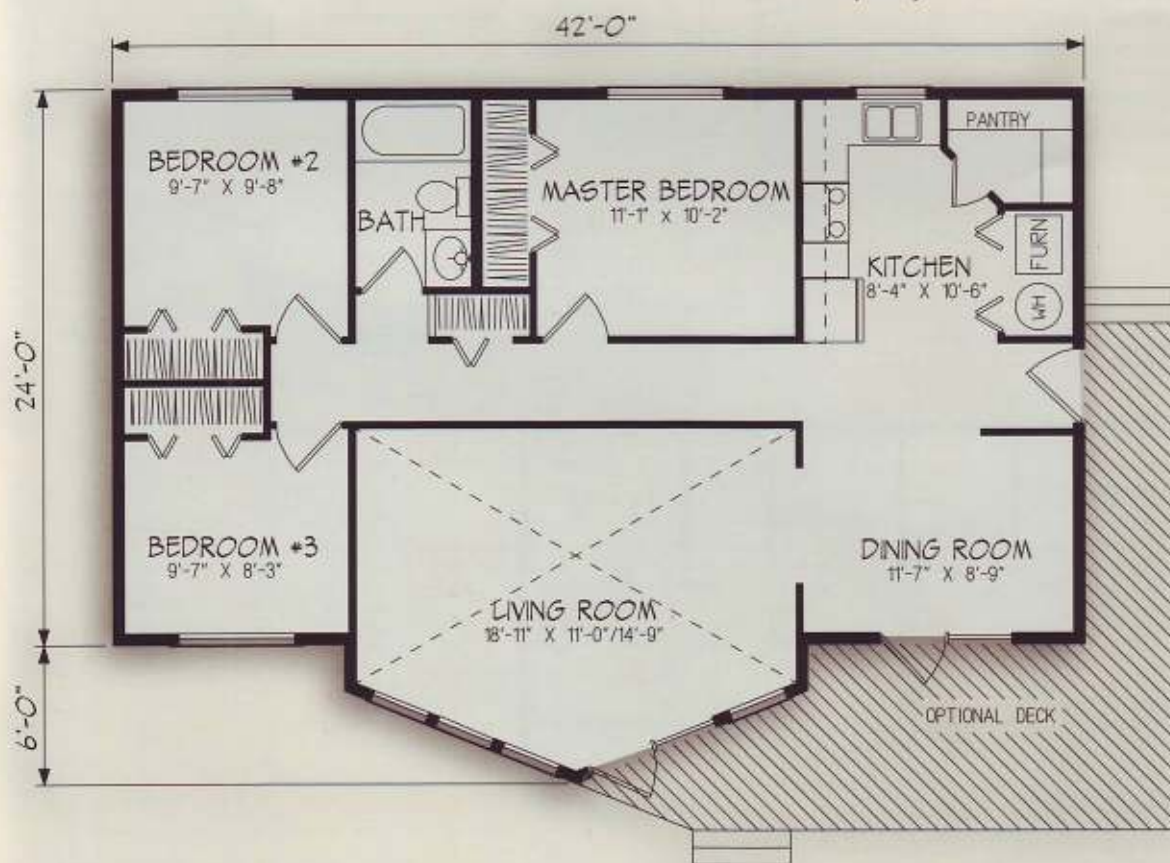






- This tranquil three-bedroom cottage features a vaulted living room with stately prow windows
- Large optional front deck invites outdoor living
- Cozy kitchen offers plenty of storage space with a walk-in pantry

1088 sq.



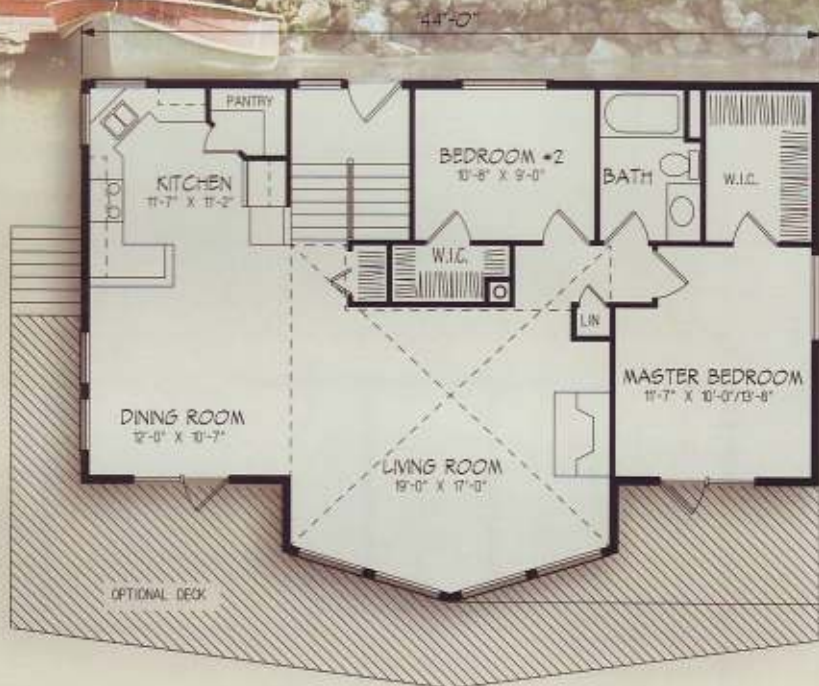


# the Cranbrook



1166 sq. ft.

- Practical split entry to rear of home is ideal for sloped lot development
- Open front living areas with plenty of windows take advantage of outside views
- Access to optional front deck from master bedroom and dining area
- A walk-out basement makes this plan ideal for main level development







1262 sq.

- Exceptional basement entry home with direct access from the garage
- Stairwell opens to a large kitchen with eating bar
- Spacious living room has a high vaulted ceiling with expansive view to outdoors
- The lower level provides plenty of space for future development



upper level



main level  
future development





# the Frontier

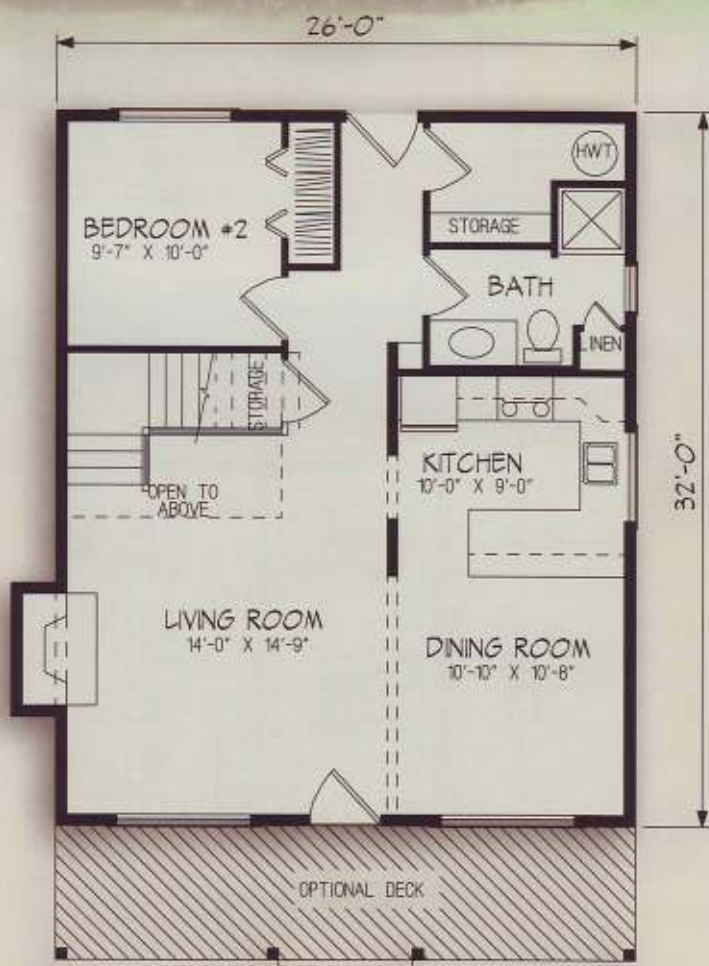


1280 sq. ft.  
Main 832 sq. ft.  
Upper 448 sq. ft.

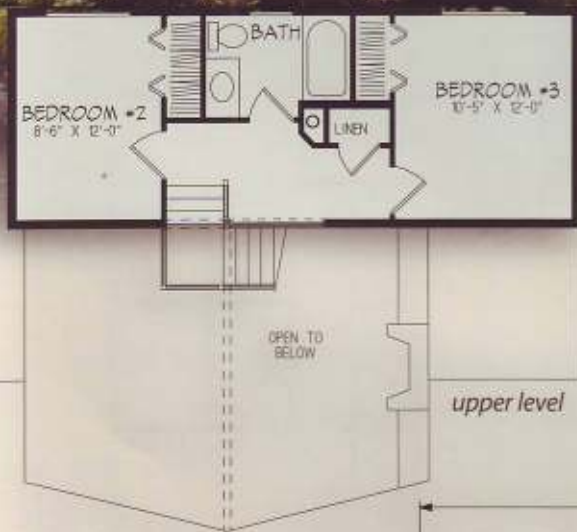
- Functional U-shaped kitchen features counter seating
- Master bedroom features a large walk-out balcony
- Front entry opens to spacious living areas



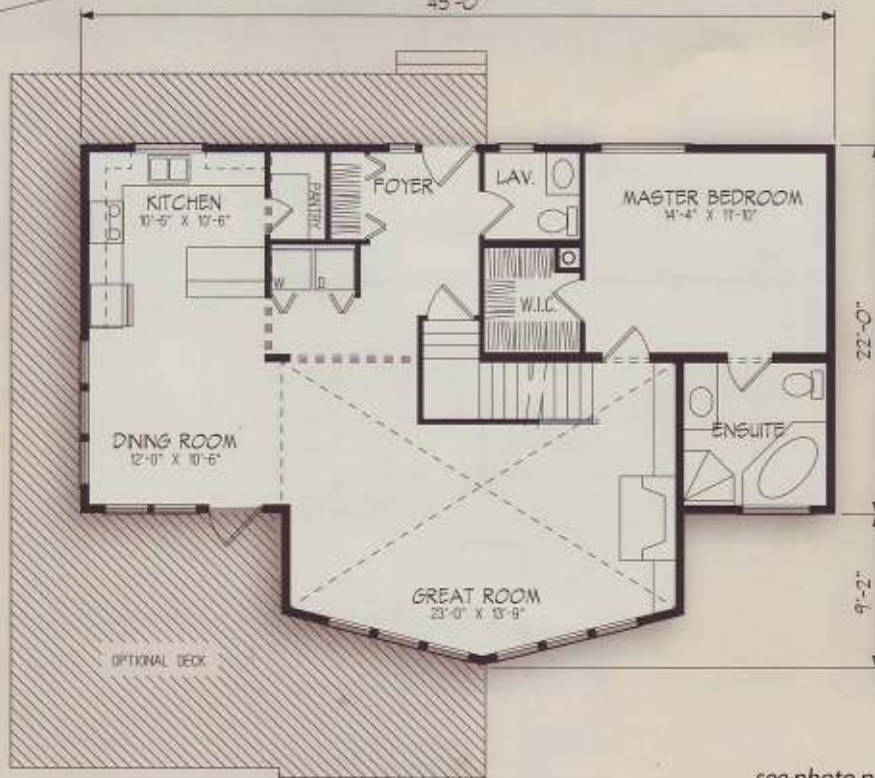
upper level







- Attractive cottage is at home in the mountains or at the lake
- Rear entry allows the living areas to face the views
- Kitchen has a coffee bar and large pantry
- Plenty of windows flood living areas with light
- Generous master suite has luxurious bath and walk-in closet



1612 sq.  
Main 1170 sq.  
Upper 442 sq.



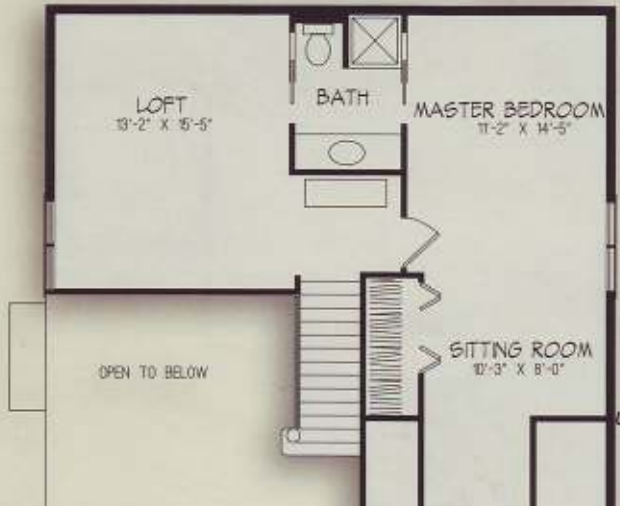


# the Pioneer



1673 sq. ft.  
Main 960 sq. ft.  
Upper 713 sq. ft.

- This dormer-styled cottage features a cozy veranda
- A vaulted ceiling provides a spacious and open great room and an overlooking loft
- The kitchen has a large pantry and a convenient utility room
- The huge master bedroom features a private sitting room and ensuite

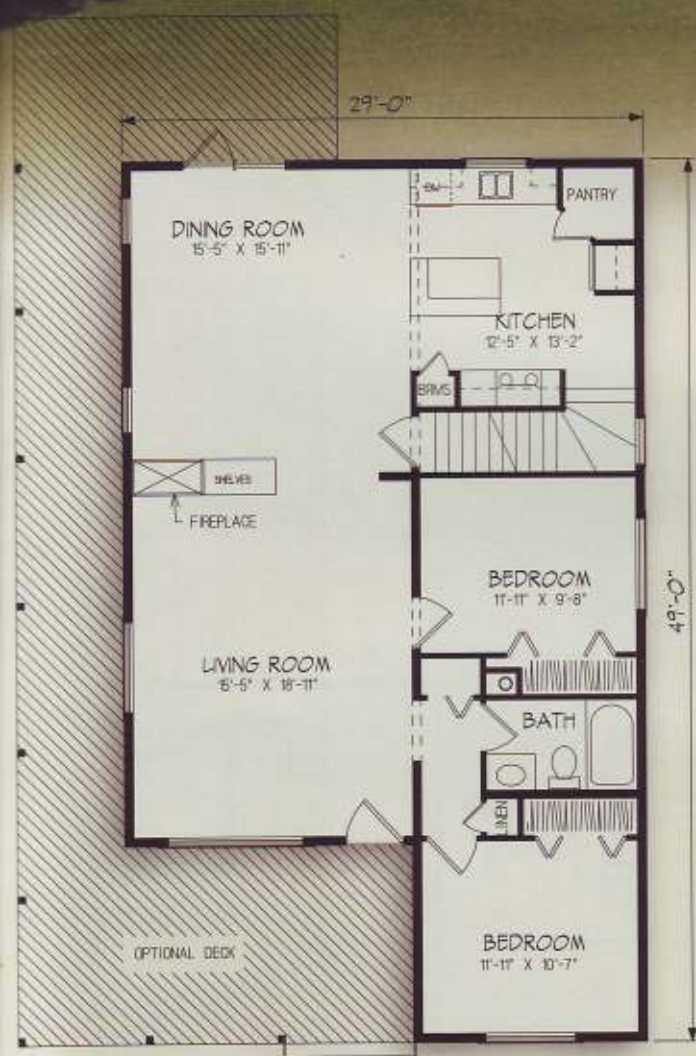


main level

upper level

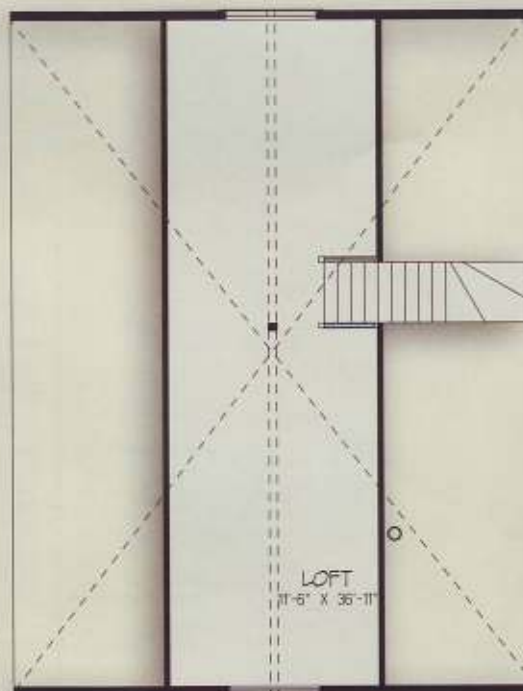






main level

- 1-1/2 storey, two-bedroom cottage
- Covered wrap-around deck
- Double-sided fireplace to dining and living room
- Loft area upstairs could be used as a private master suite
- Kitchen features island with eating ledge and corner pantry



upper level

1675 sq.  
Main 1245 sq.  
Upper 430 sq.



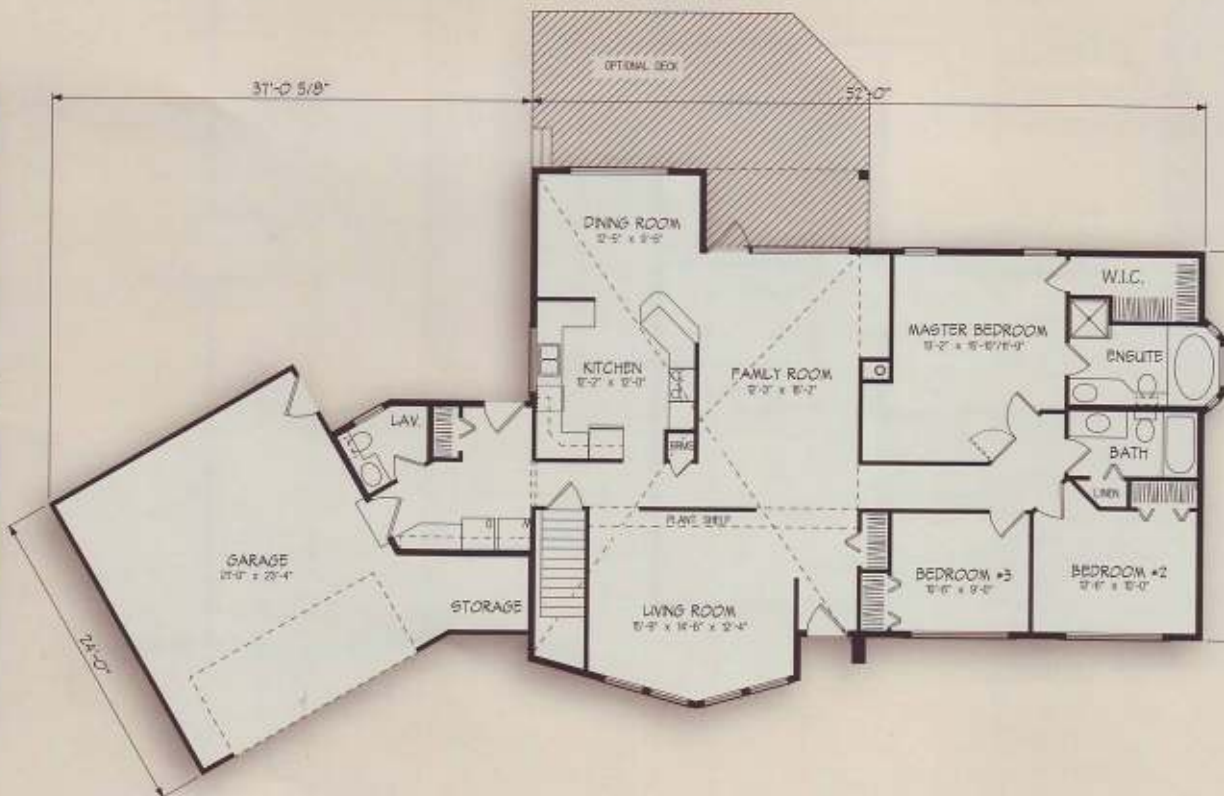


# the Westbury



1891 sq. ft.

- Impressive cathedral ceiling
- Kitchen is smartly located between living room and dining area
- Master bedroom features a walk-in closet, double door entry, bay window with raised jacuzzi
- Rear entry utility room with lavatory creates an angled division between home and garage







2035 sq. ft.  
Main 1200 sq. ft.  
Upper 835 sq. ft.



- Bright, open floor plan with optional deck wrapping around three sides
- Upper level loft has a private balcony and view to below
- Living room with optional corner fireplace is open to dining and kitchen areas
- Kitchen features angled eating bar/workstation and walk-in pantry
- Laundry on the main level
- Master bedroom with three-piece ensuite and walk-in closet
- Walk-in closet in second bedroom



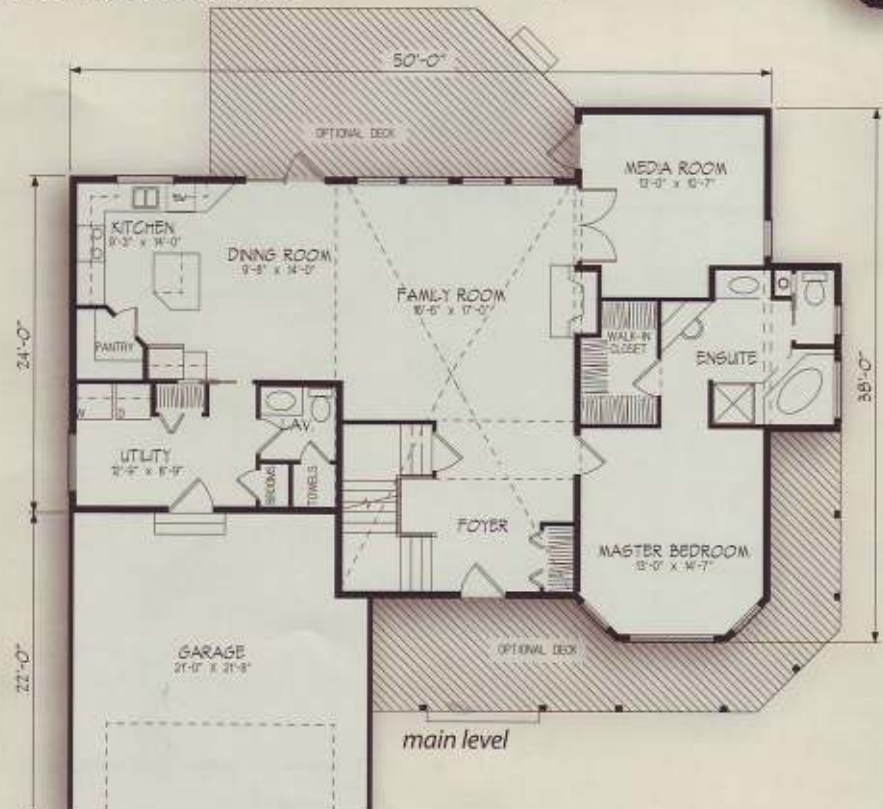
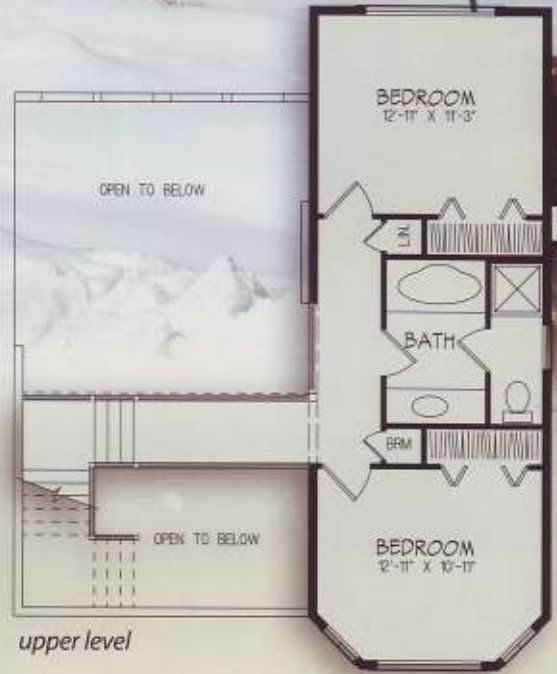


# the Pinecrest



2072 sq. ft.  
Main 1549 sq. ft.  
Upper 523 sq. ft.

- A low profile ranch style
- Spacious front foyer has open stairs and a bridge to the upper level bedrooms
- The main floor master suite features a large walk-in closet and luxurious bath
- A spacious family room opens to a flex room that doubles as a media room, guest room or den



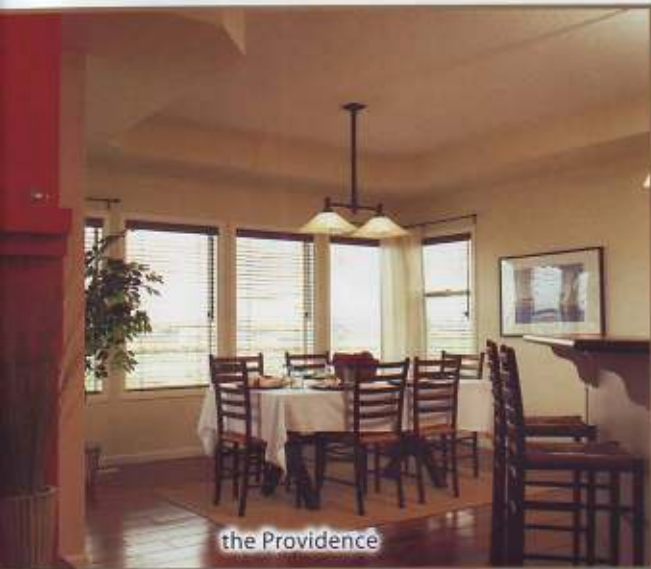




Custom Design - Manzanita Homes, CA



the Hartwell



the Providence



the Austin-Ray



the Glenda



the Paragon





# Photo Gallery



the Victory - Denali Builders, AK

alaskaphotographics.com



Custom Cottage - Countryside Homes, OR



the Ashmont - Sawco Construction, AB



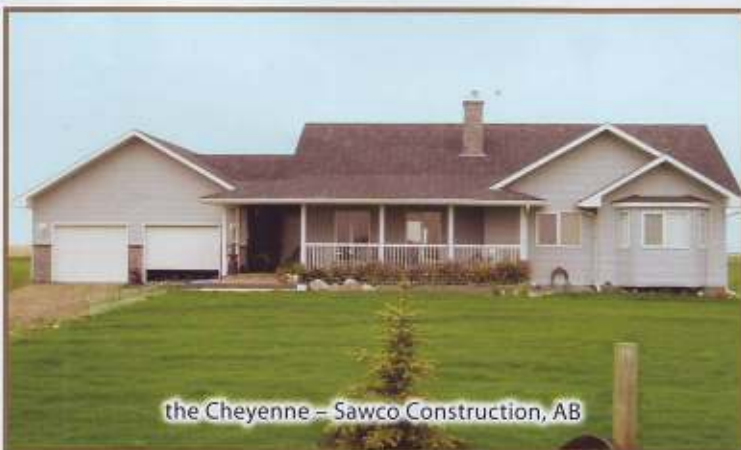
the Austin-Ray - 50th Anniversary Home, AB



the Carlisle - Alberta Hospitals' Lottery Home, AB



the Victory - Acadia Ventures, CO



the Cheyenne - Sawco Construction, AB



Custom Design - Countryside Homes, OR







Custom Design - Manzanita Homes, CA



the Victory - Magnuson Construction, MT



Custom Design - Acadia Ventures, CO



the Westwind, SK



Custom Design - Denali Builders, AK



the Elkridge - Magnuson Construction, MT



the Royal - Start-Rite Construction, YK



the Remington, CO





## Home Plan Collection

Aaron.....	1021 sq.ft.	14	Fairfield.....	2076 sq.ft.	77	Premiere.....	1624 sq.ft.	62
Abbey.....	1096 sq.ft.	19	Frontier.....	1280 sq.ft.	114	Prescott.....	1496 sq.ft.	52
Abilene.....	1501 sq.ft.	53	Garrison.....	2458 sq.ft.	89	Providence.....	2136 sq.ft.	79
Albany.....	1412 sq.ft.	46	Gatsby.....	1557 sq.ft.	56	Quesnel.....	1254 sq.ft.	32
Aldrich.....	1322 sq.ft.	38	Glenda.....	2557 sq.ft.	91	Rebecca.....	1162 sq.ft.	24
Aldwyn.....	1461 sq.ft.	48	Grayson.....	2457 sq.ft.	88	Remington.....	1908 sq.ft.	73
Alida.....	1169 sq.ft.	26	Grizzly.....	448 sq.ft.	108	Ridgedale.....	4057 sq.ft.	105
Allen.....	982 sq.ft.	13	Hailey.....	1268 sq.ft.	33	Rondel.....	1073 sq.ft.	17
Alpine.....	1262 sq.ft.	113	Hartford.....	2370 sq.ft.	101	Royale.....	1559 sq.ft.	57
Arizona.....	2448 sq.ft.	86	Hartwell.....	1772 sq.ft.	66	Rycroft.....	1180 sq.ft.	29
Ashley.....	1290 sq.ft.	35	Jaela.....	1111 sq.ft.	20	Sagewood.....	1675 sq.ft.	117
Ashmont.....	2214 sq.ft.	80	Jaymes.....	1180 sq.ft.	28	Santana.....	2559 sq.ft.	92
Auguste.....	1564 sq.ft.	59	Kallie.....	1560 sq.ft.	58	Savona.....	1474 sq.ft.	50
Austin-Ray.....	1999 sq.ft.	74	Katrina.....	1244 sq.ft.	31	Sheffield.....	2052 sq.ft.	76
Bayfield.....	2030 sq.ft.	98	Kendall.....	1353 sq.ft.	39	Shelby.....	1192 sq.ft.	30
Bradford.....	1296 sq.ft.	36	Langley.....	2400 sq.ft.	102	Sienna.....	2307 sq.ft.	82
Brooklyn.....	1576 sq.ft.	60	Laurier.....	1779 sq.ft.	67	Springfield.....	906 sq.ft.	110
Camile.....	1147 sq.ft.	22	Leighton.....	2506 sq.ft.	90	Summit.....	2568 sq.ft.	103
Care Home.....	4991 sq.ft.	106	Lethbridge.....	1607 sq.ft.	61	Sydney.....	1502 sq.ft.	54
Carlisle.....	2400 sq.ft.	85	Lydale.....	1460 sq.ft.	47	Teslin.....	1288 sq.ft.	34
Cascade.....	1487 sq.ft.	51	Lynden.....	2079 sq.ft.	99	Townsend.....	1808 sq.ft.	70
Cheyenne.....	1723 sq.ft.	65	Maidstone.....	1795 sq.ft.	68	Trident.....	1074 sq.ft.	18
Cimмерon.....	1673 sq.ft.	63	Marshall.....	978 sq.ft.	12	Trinity.....	2376 sq.ft.	83
Citation.....	1544 sq.ft.	55	McFee.....	1053 sq.ft.	15	Vector.....	1897 sq.ft.	72
Clinton.....	1164 sq.ft.	25	Medallion.....	2748 sq.ft.	93	Vermilion.....	2262 sq.ft.	100
Cottonwood.....	704 sq.ft.	109	Medford.....	1709 sq.ft.	64	Victory.....	2021 sq.ft.	75
Courtney.....	1147 sq.ft.	23	Megan.....	1356 sq.ft.	40	Weatherton.....	1375 sq.ft.	42
Covington.....	2247 sq.ft.	81	Mesa.....	1358 sq.ft.	41	Westbury.....	1891 sq.ft.	118
Cranbrook.....	1166 sq.ft.	112	Montana.....	3064 sq.ft.	94	Westwind.....	1088 sq.ft.	111
Cranston.....	1467 sq.ft.	49	Omega.....	1115 sq.ft.	21	Whistler.....	1054 sq.ft.	16
Cyprus.....	2451 sq.ft.	87	Palisar.....	1849 sq.ft.	71	Winston.....	2399 sq.ft.	84
Dakota.....	1393 sq.ft.	44	Paragon.....	1378 sq.ft.	43			
Denali.....	2035 sq.ft.	119	Parnell.....	1404 sq.ft.	45			
Devon.....	1180 sq.ft.	27	Phoenix.....	2082 sq.ft.	78			
Elkridge.....	1612 sq.ft.	115	Pinecrest.....	2072 sq.ft.	120			
Emerson.....	2874 sq.ft.	104	Pioneer.....	1673 sq.ft.	116			

**Thank you to our suppliers and Nelson Homes Authorized Dealers who provided pictures and letters for this catalogue:**

• Armstrong Flooring.....	p. 16, 21, 37, 48, 101, 111, 112, 126	• Aamax Construction, NV.....	p. 7
• Boncor Royal Crest Siding.....	p. 126	• Acadia Ventures, CO.....	p. 7-panelized construction, 108, 122, 114, 115, 116, 119, 126
• Canadian Stone Industries.....	p. 2, 87, 115, 116, 119, 126	• Countryside Homes, OR.....	p. 45, 114, 115, 116, 119, 126
• Chemcrest Architectural Products.....	p. 12, 24, 25, 29, 50, 61, 110	• Cresswell Home Service, BC.....	p. 1
• CWD Windows and Doors.....	p. 35, 75, 76, 82, 89, 96, 107, 113, 126	• Canadian Timber Homes SK.....	p. 1
• Emco Building Products.....	p. 126	• Denali Builders, AK.....	p. 5, 122, 114, 115, 116, 119, 126
• Expocrete.....	p. 126	• Golden Oak Dev., AB.....	p. 1
• General Paint.....	p. 126	• Junior J's Investments, AB.....	p. 3
• Jeld-Wen.....	p. 126	• Magnuson Construction, MT.....	p. 1
• Kitchen Craft.....	p. 13, 17, 22, 34, 38, 126	• Manzanita Homes, CA.....	p. 93, 121, 114, 115, 116, 119, 126
• Loewen Windows.....	p. 1, 32, 33, 36, 44, 56, 64, 87, 100, 118, 126	• Sawco Construction, AB.....	p. 1
• Metal Span Roll Forming Corp.....	p. 126	• Start-Rite Construction, YK.....	p. 1
• Plasti-Fab Advantage ICF System.....	p. 126	• Steven Beyler, CA.....	p. 1
• Sauder Moulding & Millwork.....	p. 124, 126	• Wes Peterson, AK.....	p. 1
• Superior Cabinets.....	p. 19, 26, 63, 64, 84		
• Woodland Supply.....	p. 126		



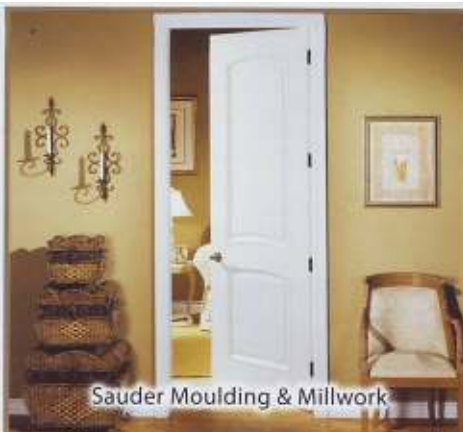




# Suppliers



CWD Windows & Doors



Sauder Moulding & Millwork



Expocrete



Boncor - Royal Crest Siding



Creative Door Services



Emco Building Products



Jeld-Wen Windows & Doors



Armstrong Flooring



Loewen



General Paint



Kitchen Craft



Canadian Stone Industries



Metal Span Roll Forming Corp.



Plasti-Fab Advantage ICF System



Woodland Supply





**Thank You...**  
*to our suppliers for their quality material and ongoing support.*

*PVC & Metal Clad Wood  
 Windows & Exterior Doors*

*Sauder Tru-fit Doors,  
 Moulding and Millwork*

*Batt Insulation  
 & Super Pink Blow-in Insulation*



**MOULDING & MILLWORK**



[www.cwdwindows.com](http://www.cwdwindows.com)

[www.mouldingandmillwork.com](http://www.mouldingandmillwork.com)

[www.owenscorning.com](http://www.owenscorning.com)

*PWF & Treated Lumber*

*I-Joist and Engineered Wood Products*

*Drywall & Accessories*

**taiga**  
 building products

**LP**  
 BUILDING PRODUCTS



[www.taigabuilding.com](http://www.taigabuilding.com)

[www.lpcorp.com](http://www.lpcorp.com)

[www.bpb.com](http://www.bpb.com)





**Thank You...**  
**to our suppliers for their quality material and ongoing support.**

*Vinyl Siding by Boncor*



[www.royalbuildingproducts.com](http://www.royalbuildingproducts.com)

*Overhead Garage Doors*



[www.creativedoor.com](http://www.creativedoor.com)

*Shingles*



[www.emcobp.com](http://www.emcobp.com)

*Rigid Insulation, Ply Clips,  
Roof Vents, Butyl Caulking, Mirror Bi-folds,  
Joist hangers, Poly, PWF Straps*



[www.gbpd.com](http://www.gbpd.com)

*Door Craft  
Interior Finishes*



[www.jeld-wen.com](http://www.jeld-wen.com)

*Locksets*



[www.weiserlock.com](http://www.weiserlock.com)

*Roof Truss Design Software  
& Engineering*



[www.mii.com](http://www.mii.com)

*Westlam Beams & WSL Beams*



[www.westernarchrib.com](http://www.westernarchrib.com)

*Concrete Walls & Paving Stones*



[www.expocrete.com](http://www.expocrete.com)





**Thank You...**  
*to our suppliers for their quality material and ongoing support.*

*Armstrong Flooring*



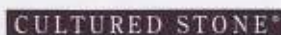
[www.armstrong.com](http://www.armstrong.com)

*Appearance Grade  
 and MSR Spruce Lumber*



[www.cewp.ca](http://www.cewp.ca)

*Cultured Stone  
 Canadian Stone Industries*



[www.culturedstone.com](http://www.culturedstone.com)

*Wood Frame &  
 Metal Clad Wood Windows*



[www.loewen.com](http://www.loewen.com)

*Power Tools*



[www.dewalt.com](http://www.dewalt.com)

*Paint & Accessories*



[www.generalpaint.com](http://www.generalpaint.com)

*Kitchen & Bath Cabinets*



[www.kitchencraft.com](http://www.kitchencraft.com)

*Flooring*



[www.mannington.com](http://www.mannington.com)

*Metal Cladding, Decking  
 & Custom Flashing*



[www.metal-span.com](http://www.metal-span.com)

*Insulated Concrete Forms*



[www.plastifab.com](http://www.plastifab.com)

*Blow-in Insulation /  
 Turbines & Vents*



[www.can-cell.com](http://www.can-cell.com)

*Interior Railing,  
 Doors & Spindles*



[www.woodlandsupply.ca](http://www.woodlandsupply.ca)





*Let Us Turn Your Dream Home Into Reality!*

**Over 130 Authorized Dealers Throughout North America**

***Head Office & Factory***

P.O. Box 620, 5027 44 Street  
Lloydminster, AB S9V 0Y8

**Toll Free 1-800-661-6534**

**Phone (780) 871-6300**

---

***In Northern Alberta Visit Nelson Lumber Stores:***

- **Bonnyville:** Highway 28 E Ph: 780-826-3140 Toll Free: 1-800-267-6457
- **Grande Prairie:** 14525 100 St. Ph: 780-532-5454 Toll Free: 1-800-738-8874
- **Edmonton:** 12727 St. Albert Trail Ph: 780-452-9151 Toll Free: 1-800-349-6806
- **Lloydminster:** 5027 44 St. Ph: 780-871-6300 Toll Free: 1-800-661-6526
- **Slave Lake:** 101 Birch Road NE Ph: 780-849-9663

***Ready To Move Homes:***

- **Lloydminster:** 5027 - 44 St. Ph: 780-871-6300 Toll Free: 1-800-661-6526
- **Aldersyde:** Hwy 2A Ph: 403-601-2006 Toll Free: 1-877-864-6634